

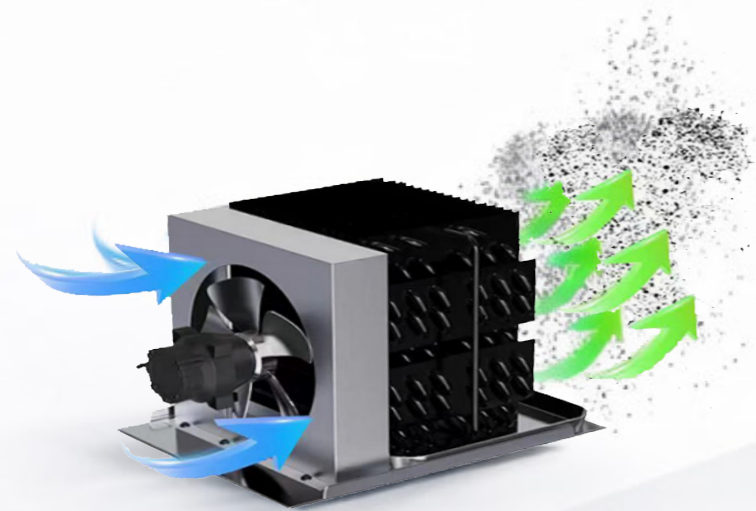
**Contact us:** info@sub-equip.com  
sales@sub-equip.com

**China:** Unit 201, Building 2, No. 8 Science and Technology Eighth Road,  
Xingtian Industrial Zone Qixing Community, Xingtian Town,  
Shunde District, Foshan City, Guangdong Province, China



www.sub-equip.com

# Commercial Refrigeration Product Catalog



*One integrated unit with self-cleaning capability delivers continuous high-efficiency air purification with minimal maintenance and reduced labor requirements.*



For a wider selection of products, kindly explore our website at: [www.sub-equip.com](http://www.sub-equip.com)  
If the data and structure update, without notice, subject to material object.





www.sub-equip.com

## Our Mission:

To deliver high-performance refrigeration solutions that ensure the freshness, safety, and quality of stored products for the foodservice industry.

Sub-Equip Refrigeration is dedicated to providing energy-efficient, durable, and innovative refrigeration systems tailored to meet the evolving needs of our customers while maintaining exceptional service and support.

## Our Vision:

To become a global leader in refrigeration technology by setting new standards in efficiency, reliability and sustainability.

Sub-Equip Refrigeration strives to empower foodservice professionals with advanced refrigeration solutions that enhance their operations and contribute to a more sustainable future.



Conforms to UL Standard 471  
Certified to CSA Standard C22.2 No. 120



Certified to NSF / ANSI 7



www.sub-equip.com

## ABOUT US

Foshan Jiaxuan Electrical Appliances Co., Ltd. specializes in the design, production, and sales of refrigeration and temperature/humidity control equipment. With industry expertise and advanced technology, the company has developed innovative products with independent intellectual property rights, establishing itself as a leader in the field.

### Our main products include:

- Refrigeration Workbench Series: Refrigerated worktables and prep tables
- Display Cabinets: Upright display cabinets, open display cases, cake showcases, and aging cabinets for beef maturation
- Refrigerators: Upright refrigerators and blast freezers
- Specialized Units: Beer cabinets, pizza cabinets, dry-aging cabinets, and more
- Refrigeration Units: Various air-handling equipment related to cooling and freezing committed to quality and innovation, Foshan Jiaxuan delivers reliable solutions for commercial refrigeration.

### About our brand: Sub-Equip

Established in Canada in 2018, Sub-Equip is Foshan Jiaxuan's exclusive brand, created to support foodservice professionals with premium refrigeration products.

Sub-Equip offers diverse range of reliable, high-quality equipment tailored to meet the needs of the foodservice industry across Canada.

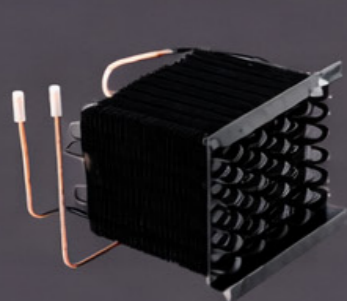
# SUB-EQUIP ADVANTAGES

-Self-Cleaning Condenser Technology



-The condenser located within the condensation pan efficiently facilitates the evaporation of excess water

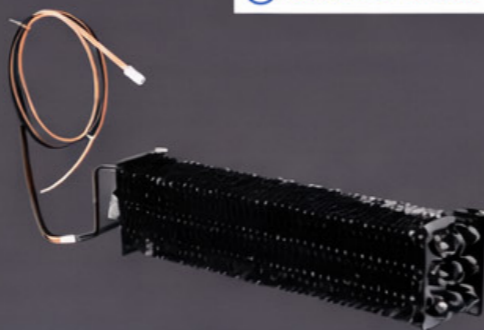
-Crafted from a single bent tube, this design incorporates only two welding joints, effectively reducing the risk of leaks



Condenser



Condenser



Evaporate Coil

# CONTENTS

BLACK SLIDING GLASS DOOR MERCHANDISER REFRIGERATOR	2
BLACK SWING GLASS DOOR MERCHANDISER REFRIGERATOR	3
BLACK SWING GLASS DOOR MERCHANDISER FREEZER	4
PASS THROUGH REFRIGERATOR	5-6
STAINLESS STEEL GLASS DOOR REACH-IN REFRIGERATION	7-10
STAINLESS STEEL SOLID DOOR REACH-IN REFRIGERATION	11-14
STAINLESS STEEL SOLID DOOR ROLL IN REFRIGERATION	15-16
DRY AGING REFRIGERATOR	17-18
BLAST CHILLER/FREEZER	19-20
CHEF BASE	21-22
UNDERCOUNTER REFRIGERATION	23-28
BACK BAR REFRIGERATOR	29-32
SALAD & SANDWICH PRE TABLE	33-38
SALAD & SANDWICH PRE TABLE WITH SNEEZE GLASS REFRIGERATOR	39-40
SALAD & SANDWICH PRE TABLE WITH MABLE COUNTERTOP	41-42
MABLE COUNTERTOP REFRIGERATOR WITH 8 PCS SAUCE PANS	43
UNDERCOUNTER REFRIGERATOR WITH 8 PCS 1/6 SIZE PANS	44
PIZZA PRE TABLE REFRIGERATOR	45-46
WORKSTATION REFRIGERATOR	47-48
GRAB N GO REFRIGERATOR	49-50
GRAG N GO REFRIGERATED AIR CURTAIN MERCHANDISER	51-52
CAKE DISPLAY SHOWCASE	53-54
SUSHI DISPLAY SHOWCASE	55-56



www.sub-equip.com

# MERCHANDISING GLASS DOOR REFRIGERATION



## Features

- CFC free refrigerant and foam insulation
- Electronic thermostat and digital LED temperature display for accurate control and easy reading
- Self-closing door
- Air outlet designed to promote uniform interior temperature within the cabinet
- Energy efficient Low-e triple pane glass doors with heater on glass and inside door frame
- The coated copper tube, boasting a sturdy 0.7mm thickness, ensures durability
- Crafted from a single bent tube, minimizing the risk of leaks with only two welding joints
- The condenser is efficiently positioned inside the condensation pan to facilitate the evaporation of excess water
- INTERIOR: White powder-coated steel
- EXTERIOR: Black powder-coated steel
- LED interior lighting to enhance product display
- Adjustable and heavy-duty epoxy-coated wire shelves for flexible storage options
- Easy to mount 4" casters (front casters with brakes) are standard with all units
- Electrical specifications: 115/60/1 with a NEMA 5-15P plug and a 10ft cord
- Three door freezer equipped with a 5-20p plug
- R-290 refrigerant
- SGS & SGS Sanitation Certificate



www.sub-equip.com

# Black Sliding Glass Door Merchandiser Freezer



- Interior temperature range: 1°C to 4°C ( 33°F to 40°F)

Model	Doors	Exterior Dimensions (W x D x H)	Shelves	Voltage (V/Hz/Ph)	Amps	Power	NEMA PLUG	N.W	G.W	Packing Size (W x D x H)
CDM-B36SR	Refrigerator 2 Doors	1003 x 756 x 2053 mm 39.49 x 29.76 x 80.83"	8	115/60/1	6.5	650 W 0.88 HP	5-15P	170 kg 374 lbs	196 kg 431 lbs	1063 x 890 x 2253 mm 41.88 x 35.04 x 88.75"
CDM-B42SR	Refrigerator 2 Doors	1220 x 756 x 2053 mm 48.03 x 29.76 x 80.83"	8	115/60/1	7	700W 0.95 HP	5-15P	198 kg 436 lbs	235 kg 517 lbs	1280 x 890 x 2253 mm 50.50 x 35.04 x 88.75"
CDM-B48SR	Refrigerator 2 Doors	1370 x 756 x 2053 mm 53.94 x 29.76 x 80.83"	8	115/60/1	8.5	900W 1.22 HP	5-15P	217 kg 487 lbs	251 kg 553 lbs	1430 x 890 x 2253 mm 56.30 x 35.04 x 88.75"
CDM-B72SR	Refrigerator 3 Doors	2050 x 756 x 2053 mm 80.71 x 29.76 x 80.83"	12	115/60/1	8.5	900W 1.22 HP	5-15P	286 kg 630 lbs	338 kg 745 lbs	2110 x 890 x 2253 mm 83.00 x 35.04 x 88.75"

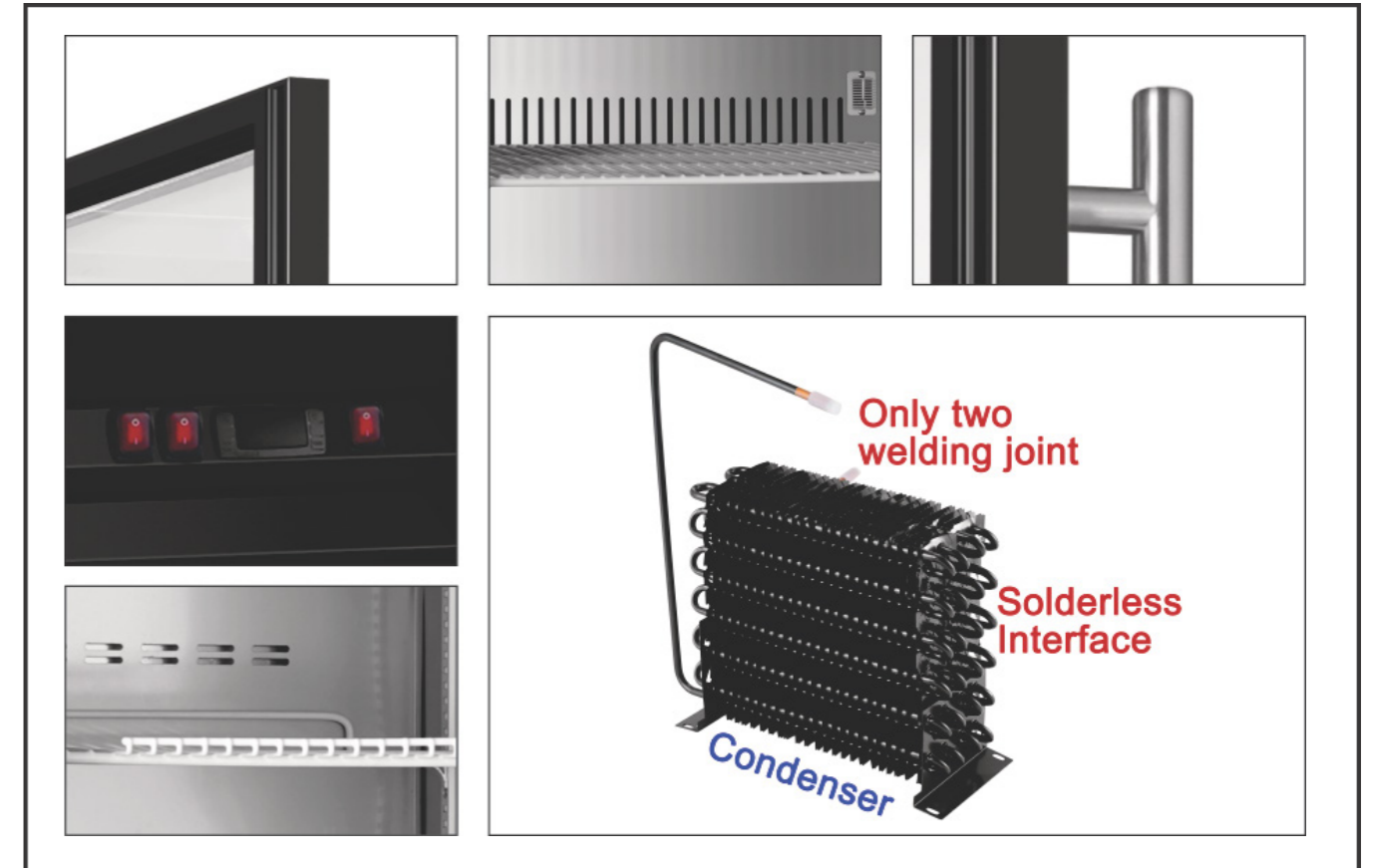
## Black Swing Glass Door Merchandiser Refrigerator



- Interior temperature range: 1°C to 4°C ( 33°F to 40°F)

Model	Doors	Exterior Dimensions (W x D x H)	Shelves	Voltage (V/Hz/Ph)	Amps	Power	NEMA PLUG	N.W	G.W	Packing Size (W x D x H)
CDM-B13R	Refrigerator 1 Door	575 x 605 x 2053 mm 22.64 x 23.82 x 80.83"	4	115/60 /1	4.5	450 W 0.61 HP	5-15P	125 kg 275 lbs	126 kg 319 lbs	635 x 665 x 2253 mm 25.00 x 26.25 x 88.75"
CDM-B16R	Refrigerator 1 Door	635 x 660 x 2053 mm 25.00 x 25.98 x 80.83"	4	115/60/1	5	550 W 0.75 HP	5-15P	135 kg 297 lbs	155 kg 341 lbs	695 x 720 x 2253 mm 27.50 x 28.38 x 88.75"
CDM-B23R	Refrigerator 1 Door	680 x 805 x 2053 mm 26.77 x 31.69 x 80.83"	4	115/60/1	5	550 W 0.75 HP	5-15P	140 kg 308 lbs	160 kg 352 lbs	740 x 890 x 2253 mm 29.25 x 35.00 x 88.75"
CDM-B36R	Refrigerator 2 Doors	1003 x 805 x 2053 mm 39.49 x 31.69 x 80.83"	8	115/60/1	6.5	650 W 0.88 HP	5-15P	184 kg 404 lbs	221 kg 487lbs	1070 x 890 x 2253 mm 42.13 x 35.00 x 88.75"
CDM-B42R	Refrigerator 2 Doors	1220 x 805 x 2053 mm 48.03 x 31.69 x 80.83"	8	115/60/1	7	700W 0.95 HP	5-15P	210 kg 462 lbs	250 kg 550 lbs	1280 x 890 x 2253 mm 50.50 x 35.00 x 88.75"
CDM-B48R	Refrigerator 2 Doors	1370 x 805 x 2053 mm 53.94 x 31.69 x 80.83"	8	115/60/1	8.5	900W 1.22 HP	5-15P	225 kg 496 lbs	253 kg 557 lbs	1430 x 890 x 2253 mm 56.38 x 35.00 x 88.75"
CDM-B72R	Refrigerator 3 Doors	2050 x 805 x 2053 mm 80.71 x 31.69 x 80.83"	12	115/60/1	8.5	900W 1.22 HP	5-15P	310 kg 683 lbs	341kg 751 lbs	2110 x 890 x 2253 mm 83.00 x 35.00 x 88.75"

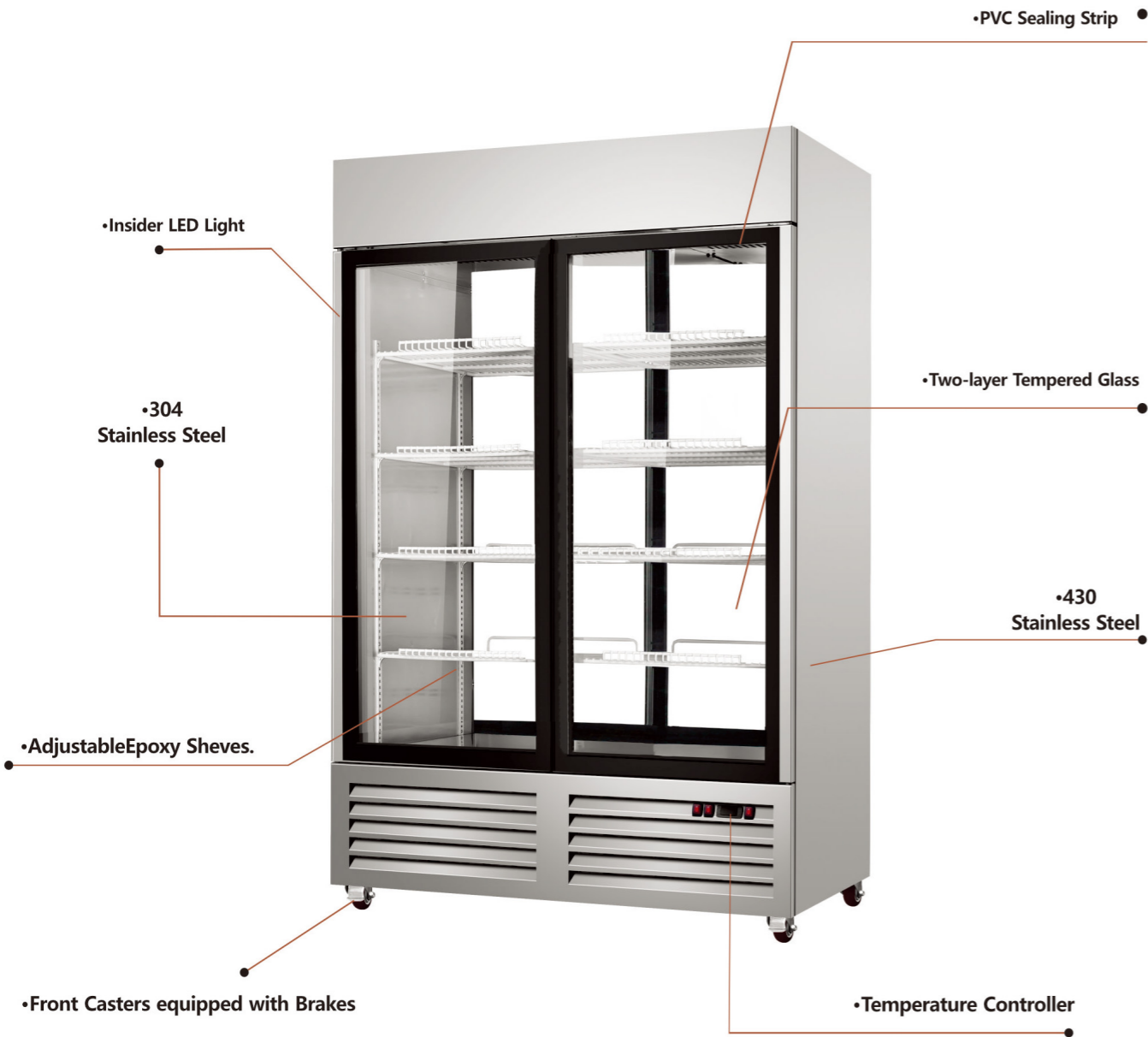
## Black Swing Glass Door Merchandiser Freezer



- Interior temperature range: -18°C to -22°C ( 0°F to -7°F)

Model	Doors	Exterior Dimensions (W x D x H)	Shelves	Voltage (V/Hz/Ph)	Amps	Power	NEMA PLUG	N.W	G.W	Packing Size (W x D x H)
CDM-B13F	Freezer 1 Door	575 x 605 x 2053 mm 22.64 x 23.82 x 80.83"	4	115/60 /1	4.5	450 W 0.61 HP	5-15P	125 kg 275 lbs	145 kg 319 lbs	635 x 665 x 2253 mm 25.00 x 26.25 x 88.75"
CDM-B16F	Freezer 1 Door	635 x 660 x 2053 mm 25.00 x 25.98 x 80.83"	4	115/60/1	5	550 W 0.75 HP	5-15P	135 kg 297 lbs	152 kg 335 lbs	695 x 720 x 2253 mm 27.50 x 28.38 x 88.75"
CDM-B23F	Freezer 1 Door	680 x 805 x 2053 mm 26.77 x 31.69 x 80.83"	4	115/60/1	5	550 W 0.75 HP	5-15P	140 kg 308 lbs	164 kg 361 lbs	740 x 890 x 2253 mm 29.25 x 35.00 x 88.75"
CDM-B36F	Freezer 2 Doors	1003 x 805 x 2053 mm 39.49 x 31.69 x 80.83"	8	115/60/1	6.5	650 W 0.88 HP	5-15P	184 kg 405 lbs	216 kg 475 lbs	1070 x 890 x 2253 mm 42.13 x 35.00 x 88.75"
CDM-B42F	Freezer 2 Doors	1220 x 805 x 2053 mm 48.03 x 31.69 x 80.83"	8	115/60/1	7	700W 0.95 HP	5-15P	210 kg 462 lbs	250 kg 550 lbs	1280 x 890 x 2253 mm 50.50 x 35.00 x 88.75"
CDM-B48F	Freezer 2 Doors	1370 x 805 x 2053 mm 53.94 x 31.69 x 80.83"	8	115/60/1	8.5	900W 1.22 HP	5-15P	226 kg 467 lbs	255 kg 562lbs	1430 x 890 x 2253 mm 56.38 x 35.00 x 88.75"
CDM-B72F	Freezer 3 Doors	2050 x 805 x 2053 mm 80.71 x 31.69 x 80.83"	12	115/60/1	12	1400W 1.9 HP	5-20P	320 kg 704lbs	360kg 792 lbs	2110 x 890 x 2253 mm 83.00 x 35.00 x 88.75"

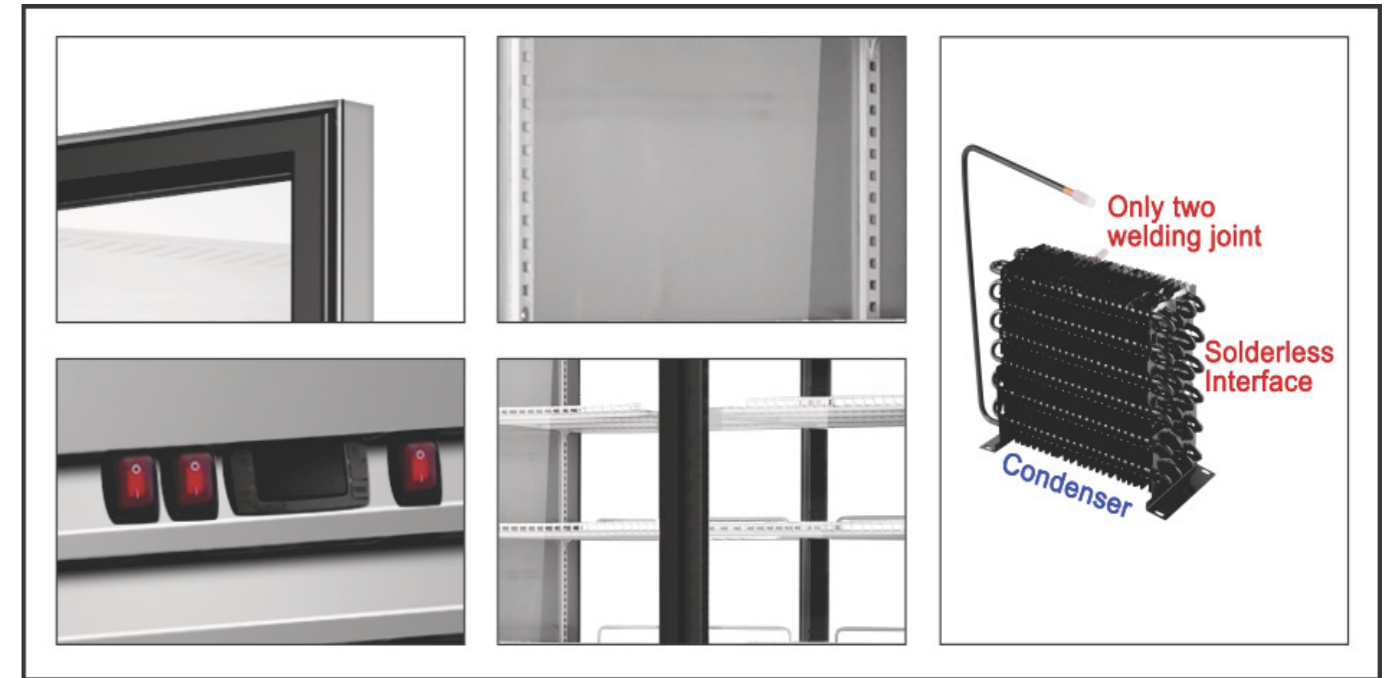
## Stainless Steel Glass Door Pass-Through Refrigerator



- Interior temperature range: 1°C to 4°C ( 33°F to 40°F)

Model	Doors	Exterior Dimensions (W x D x H)	Shelves	Voltage (V/Hz/Ph)	Amps	Power	NEMA PLUG	N.W	G.W	Packing Size (W x D x H)
CDM-48RG	Refrigerator 4 Doors	1220 x 756 x 2053 mm 48.03 x 29.76 x 80.83"	8	115/60/1	7.5	800W 1.08 HP	5-15P	236 kg 520 lbs	265 kg 583 lbs	1280 x 890 x 2253 mm 50.39 x 35.04 x 88.74"

## Stainless Steel Glass Door Pass-Through Refrigerator



### Features

- CFC free refrigerant and foam insulation
- Electronic thermostat and digital LED temperature display for accurate control and easy reading
- Self-closing door
- Air outlet designed to promote uniform interior temperature within the cabinet
- The coated copper tube, boasting a sturdy 0.7mm thickness, ensures durability
- Crafted from a single bent tube, minimizing the risk of leaks with only two welding joints
- The condenser is efficiently positioned inside the condensation pan to facilitate the evaporation of excess water
- INTERIOR: 304 stainless steel
- EXTERIOR: 430 stainless steel
- LED interior lighting to enhance product display
- Adjustable and heavy-duty epoxy-coated wire shelves for flexible storage options
- Easy to mount 4" casters (front casters with brakes) are standard with all units
- Interior temperature range: 1°C to 4°C ( 33°F to 40°F)
- Electrical specifications: 115/60/1 with a NEMA 5-15P plug and a 10ft cord
- R-290 refrigerant
- SGS & SGS Sanitation Certificate



www.sub-equip.com

# GLASS DOOR REACH-IN REFRIGERATION STAINLESS STEEL



www.sub-equip.com





## Features

- CFC free refrigerant and foam insulation
- Electronic thermostat and digital LED temperature display for accurate control and easy reading
- Self-closing door
- Air outlet designed to promote uniform interior temperature within the cabinet
- Energy efficient Low-e triple pane glass doors with heater on glass and inside door frame
- The coated copper tube, boasting a sturdy 0.7mm thickness, ensures durability
- Crafted from a single bent tube, minimizing the risk of leaks with only two welding joints
- The condenser is efficiently positioned inside the condensation pan to facilitate the evaporation of excess water
- INTERIOR: 304 stainless steel
- EXTERIOR: 430 stainless steel
- LED interior lighting to enhance product display
- Adjustable and heavy-duty epoxy-coated wire shelves for flexible storage options
- Easy to mount 4" casters (front casters with brakes) are standard with all units
- Electrical specifications: 115/60/1 with a NEMA 5-15P plug and a 10ft cord
- Three door freezer equipped with a 5-20p plug
- R-290 refrigerant
- SGS & SGS Sanitation Certificate



## Stainless Steel Glass Door Reach-In Refrigerator

- Interior temperature range: 1°C to 4°C ( 33°F to 40°F)

Model	Doors	Exterior Dimensions (W x D x H)	Shelves	Voltage (V/Hz/Ph)	Amps	Power	NEMA PLUG	N.W	G.W	Packing Size (W x D x H)
C-13RG	Refrigerator 1 Door	575 × 605 × 2053 mm 22.64 × 23.82 × 80.83"	4	115/60/1	4.5	450 W 0.61 HP	5-15P	125 kg 275 lbs	145 kg 319 lbs	635 × 665 × 2253 mm 25.00 × 26.18 × 88.75"
C-19RG	Refrigerator 1 Door	680 × 650 × 2053 mm 26.77 × 25.59 × 80.83"	4	115/60/1	5	550 W 0.75 HP	5-15P	146 kg 321 lbs	166 kg 365 lbs	740 × 710 × 2253 mm 29.13 × 27.95 × 88.75"
C-27RG	Refrigerator 1 Door	680 × 810 × 2053 mm 26.77 × 31.89 × 80.83"	4	115/60/1	5	550 W 0.75 HP	5-15P	155 kg 341 lbs	173 kg 381 lbs	740 × 890 × 2253 mm 29.13 × 35.04 × 88.75"
C-35RG	Refrigerator 2 Doors	1003 × 810 × 2053 mm 39.49 × 31.89 × 80.83"	8	115/60/1	6.5	650 W 0.88 HP	5-15P	198 kg 436 lbs	235 kg 518 lbs	1063 × 890 × 2253 mm 41.85 × 35.04 × 88.75"
C-48RG	Refrigerator 2 Doors	1220 × 810 × 2053 mm 48.03 × 31.89 × 80.83"	8	115/60/1	6.5	650 W 0.88 HP	5-15P	223 kg 491 lbs	260 kg 573 lbs	1280 × 890 × 2253 mm 50.39 × 35.04 × 88.75"
C-54RG	Refrigerator 2 Doors	1370 × 810 × 2053 mm 53.94 × 31.89 × 80.83"	8	115/60/1	8	850 W 1.15 HP	5-15P	272 kg 598 lbs	306 kg 673 lbs	1430 × 890 × 2253 mm 56.30 × 35.04 × 88.75"
C-81RG	Refrigerator 3 Doors	2050 × 810 × 2053 mm 80.71 × 31.89 × 80.83"	12	115/60/1	9	1000 W 1.36 HP	5-15P	358 kg 788 lbs	394 kg 867 lbs	2110 × 890 × 2253 mm 83.07 × 35.04 × 88.75"

## Stainless Steel Glass Door Reach-In Freezer

- Interior temperature range: -18°C to -22°C ( 0°F to -7°F)

Model	Doors	Exterior Dimensions (W x D x H)	Shelves	Voltage (V/Hz/Ph)	Amps	Power	NEMA PLUG	N.W	G.W	Packing Size (W x D x H)
C-13FG	Freezer 1 Door	575 × 605 × 2053 mm 22.64 × 23.82 × 80.83"	4	115/60/1	4.5	450 W 0.61 HP	5-15P	125 kg 275 lbs	145 kg 319 lbs	635 × 665 × 2253 mm 25.00 × 26.18 × 88.75"
C-19FG	Freezer 1 Door	680 × 650 × 2053 mm 26.77 × 25.59 × 80.83"	4	115/60/1	5	550 W 0.75 HP	5-15P	148 kg 326 lbs	168 kg 370 lbs	740 × 710 × 2253 mm 29.13 × 27.95 × 88.75"
C-27FG	Freezer 1 Door	680 × 810 × 2053 mm 26.77 × 31.89 × 80.83"	4	115/60/1	5	550 W 0.75 HP	5-15P	155 kg 341 lbs	175 kg 385 lbs	740 × 890 × 2253 mm 29.13 × 35.04 × 88.75"
C-35FG	Freezer 2 Doors	1003 × 810 × 2053 mm 39.49 × 31.89 × 80.83"	8	115/60/1	6.5	650 W 0.88 HP	5-15P	199 kg 438 lbs	236 kg 520 lbs	1063 × 890 × 2253 mm 41.85 × 35.04 × 88.75"
C-48FG	Freezer 2 Doors	1220 × 810 × 2053 mm 48.03 × 31.89 × 80.83"	8	115/60/1	7	700W 0.95 HP	5-15P	227 kg 500 lbs	265 kg 583 lbs	1280 × 890 × 2253 mm 50.39 × 35.04 × 88.75"
C-54FG	Freezer 2 Doors	1370 × 810 × 2053 mm 53.94 × 31.89 × 80.83"	8	115/60/1	8.5	900W 1.22 HP	5-15P	272 kg 598 lbs	306 kg 673 lbs	1430 × 890 × 2253 mm 56.30 × 35.04 × 88.75"
C-81FG	Freezer 3 Doors	2050 × 810 × 2053 mm 80.71 × 31.89 × 80.83"	12	115/60/1	12	1400 W 1.9 HP	5-20P	370 kg 815 lbs	428 kg 943 lbs	2110 × 890 × 2253 mm 83.07 × 35.04 × 88.75"

# SOLID DOOR REACH-IN REFRIGERATION



## Features

- CFC free refrigerant and foam insulation
- Electronic thermostat and digital LED temperature display for accurate control and easy reading
- Self-closing door
- Air outlet designed to promote uniform interior temperature within the cabinet
- The coated copper tube, boasting a sturdy 0.7mm thickness, ensures durability
- Crafted from a single bent tube, minimizing the risk of leaks with only two welding joints
- The condenser is efficiently positioned inside the condensation pan to facilitate the evaporation of excess water
- INTERIOR: 304 stainless steel. EXTERIOR: 430 stainless steel
- Adjustable and heavy-duty epoxy-coated wire shelves for flexible storage options
- Easy to mount 4" casters (front casters with brakes) are standard with all units
- Electrical specifications: 115/60/1 with a NEMA 5-15P plug and a 10ft cord
- Three door freezer equipped with a 5-20p plug
- R-290 refrigerant
- SGS & SGS Sanitation Certificate



## Stainless Steel Solid Door Reach-In Refrigerator

- Interior temperature range: 1°C to 4°C ( 33°F to 40°F)

Model	Doors	Exterior Dimensions (W x D x H)	Shelves	Voltage (V/Hz/Ph)	Amps	Power	NEMA PLUG	N.W	G.W	Packing Size (W x D x H)
C-19BR	Refrigerator 1 Door	680 × 662 × 2053 mm 26.77 × 26.06 × 80.83"	4	115/60/1	5	500 W 0.68 HP	5-15P	128 kg 282 lbs	142 kg 312 lbs	740 × 720 × 2253 mm 29.13 × 28.35 × 88.74"
C-27BR	Refrigerator 1 Door	680 × 818 × 2053 mm 26.77 × 32.20 × 80.83"	4	115/60/1	5	500 W 0.68 HP	5-15P	132 kg 290 lbs	153 kg 337 lbs	740 × 890 × 2253 mm 29.13 × 35.04 × 88.74"
C-35BR	Refrigerator 2 Doors	1003 × 818 × 2053 mm 39.49 × 32.20 × 80.83"	8	115/60/1	6.5	650 W 0.88 HP	5-15P	175 kg 385 lbs	207 kg 455 lbs	1063 × 890 × 2253 mm 41.85 × 35.04 × 88.74"
C-48BR	Refrigerator 2 Doors	1220 × 818 × 2053 mm 48.03 × 32.20 × 80.83"	8	115/60/1	7.5	800 W 1.09 HP	5-15P	189 kg 416 lbs	230kg 507 lbs	1280 × 890 × 2253 mm 50.39 × 35.04 × 88.74"
C-54BR	Refrigerator 2 Doors	1370 × 818 × 2053 mm 53.94 × 32.20 × 80.83"	8	115/60/1	7.5	800 W 1.09 HP	5-15P	226 kg 497 lbs	261 kg 575 lbs	1430 × 890 × 2253 mm 56.30 × 35.04 × 88.74"
C-81BR	Refrigerator 3 Doors	2050 × 818 × 2053 mm 80.71 × 32.20 × 80.83"	12	115/60/1	8.5	900W 1.22 HP	5-15P	318 kg 700 lbs	349 kg 768 lbs	2110 × 890 × 2253 mm 83.07 × 35.04 × 88.74"

## Stainless Steel Solid Door Reach-In Freezer

- Interior temperature range: -18°C to -22°C ( 0°F to -7°F)

Model	Doors	Exterior Dimensions (W x D x H)	Shelves	Voltage (V/Hz/Ph)	Amps	Power	NEMA PLUG	N.W	G.W	Packing Size (W x D x H)
C-19BF	Freezer 1 Door	680 × 662 × 2053 mm 26.77 × 26.06 × 80.83"	4	115/60/1	5	500 W 0.68 HP	5-15P	124 kg 273 lbs	144kg 317 lbs	740 × 720 × 2253 mm 29.13 × 28.35 × 88.74"
C-27BF	Freezer 1 Door	680 × 818 × 2053 mm 26.77 × 32.20 × 80.83"	4	115/60/1	5	500 W 0.68 HP	5-15P	133 kg 293 lbs	154kg 339 lbs	740 × 890 × 2253 mm 29.13 × 35.04 × 88.74"
C-35BF	Freezer 2 Doors	1003 × 818 × 2053 mm 39.49 × 32.20 × 80.83"	8	115/60/1	6.5	650 W 0.88 HP	5-15P	176 kg 388 lbs	208kg 458lbs	1063 × 890 × 2253 mm 41.85 × 35.04 × 88.74"
C-48BF	Freezer 2 Doors	1220 × 818 × 2053 mm 48.03 × 32.20 × 80.83"	8	115/60/1	7.5	800 W 1.09 HP	5-15P	198 kg 436 lbs	239 kg 526lbs	1280 × 890 × 2253 mm 50.39 × 35.04 × 88.74"
C-54BF	Freezer 2 Doors	1370 × 818 × 2053 mm 53.94 × 32.20 × 80.83"	8	115/60/1	7.5	800 W 1.09 HP	5-15P	226 kg 497 lbs	262kg 577 lbs	1430 × 890 × 2253 mm 56.30 × 35.04 × 88.74"
C-81BF	Freezer 3 Doors	2050 × 818 × 2053 mm 80.71 × 32.20 × 80.83"	12	115/60/1	12	1400 W 1.9 HP	5-20P	343.5 kg 757 lbs	374 kg 824 lbs	2110 × 890 × 2253 mm 83.07 × 35.04 × 88.74"

## Stainless Steel Solid Door Reach-In Freezer & Refrigerator



### Features

- CFC free refrigerant and foam insulation.
- Equipped with two electronic thermostats and digital LED temperature display for precise control and convenient reading.
- Features a self-closing swing door for added convenience.
- The magnetic gasket can be replaced without the need for any tools.
- External construction 430 stainless steel framework.
- Internally constructed with 304 stainless steel.
- Incorporates auto defrosting and auto evaporation mechanisms to prevent condensation.
- The coated copper tube, boasting a sturdy 0.7mm thickness, ensures durability.
- Crafted from a single bent tube, minimizing the risk of leaks with only two welding joints.
- The condenser is efficiently positioned inside the condensation pan to facilitate the evaporation of excess water.
- Adjustable and heavy-duty epoxy-coated wire shelves for flexible storage options.
- Comes with easy-to-mount 4" casters (front casters equipped with brakes), standard with all units.
- Electrical specifications: 115/60/1 with a NEMA 5-20P plug
- R-290 refrigerant

- Interior temperature range: Refrigerator: 1°C to 6°C (33°F to 46°F)  
Freezer: -18°C to -22°C (0°F to -7°F)

Model	Doors	Exterior Dimensions (W x D x H)	Shelves	Voltage (V/Hz/Ph)	Amps	Power	NEMA PLUG	N.W	G.W	Packing Size (W x D x H)
C-48BR/BF	2 Doors	1220 x 818 x 2053 mm 48.03 x 32.2 x 80.83"	8	115/60/1	13.5	1280W 1.72 HP	5-20P	237 kg 523 lbs	270 kg 596 lbs	1280 x 890 x 2253 mm 50.39 x 35.04 x 88.74"



www.sub-equip.com

# SOLID DOOR ROLL IN REFRIGERATION STAINLESS STEEL



## Features

- **Heavy-duty stainless steel construction**  
304 stainless steel interior and 430 stainless steel exterior for durability, hygiene, and easy cleaning
- **Top-mounted refrigeration system**  
Improves airflow performance and keeps refrigeration components away from floor-level debris
- **Digital temperature controller**  
Precise, easy-to-read temperature adjustment and monitoring
- **Dual compressors for double-door refrigerator**  
Independent refrigeration systems provide better temperature stability, faster recovery, and improved reliability.
- **18-tier stainless steel roll-in rack with casters included**  
Rack dimensions: 20.5" W x 26.5" D x 62.5"H (520.8\*670\*1725 mm)  
Designed to fit 18" x 26" (457\*660 mm) sheet pans (sheet pans not included)
- **Floor ramps included**  
Allows smooth and safe rolling of carts in and out without lifting
- **Environmentally friendly R290 hydrocarbon refrigerant**  
Energy-efficient and eco-conscious refrigeration solution
- **SGS and SGS Sanitation certified for safety and sanitation**



www.sub-equip.com



## Stainless Steel Solid Door Roll-In Refrigerator

- Interior temperature range: 1°C to 4°C ( 33°F to 40°F)

Model	Doors	Exterior Dimension (W x D x H)	Voltage (V/Hz/Ph)	Amps	Power	N.W	G.W	Packing Size (W x D x H)
C-35BR-DN	1	889*876*2222 mm 35.0" x 34.5" x 87.5"	110/60/1	6	440 W 0.59 HP	174 kg 383.6 lb	198.9 kg 438.6 lb	939 x 926 x 2372 mm 37.0 x 36.5 x 93.4"
C-72BR-DN	2	1727*876*2222 mm 68.0" x 34.5" x 87.5"	110/60/1	10	810 W 1.09 HP	308.5 kg 680.2 lb	352.8 kg 777.8 lb	1777 x 926 x 2372 mm 69.9 x 36.5 x 93.4"

## Stainless Steel Solid Door Roll-In Freezer

- Interior temperature range: -18°C to -22°C ( 0°F to -7°F)

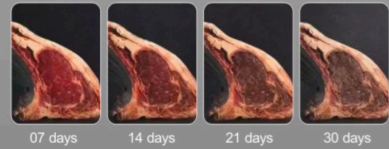
Model	Doors	Exterior Dimension (W x D x H)	Voltage (V/Hz/Ph)	Amps	Power	N.W	G.W	Packing Size (W x D x H)
C-35BF-DN	1	889*876*2222 mm 35.0" x 34.5" x 87.5"	110/60/1	10	650 W 0.87 HP	183 kg 403.4 lb	207.9 kg 458.5 lb	939*926*2372 mm 37.0" x 36.5" x 93.4"
C-72BF-DN	2	1727*876*2222 mm 68.0" x 34.5" x 87.5"	110/60/1	16	1110 W 1.49 HP	323.5 kg 713.0 lb	367.8 kg 810.8 lb	1777*926*2372 mm 69.9" x 36.5" x 93.4"



www.sub-equip.com



# DRY AGIN REFRIGERATOR



For those who truly appreciate exceptional meat, dry aging fridge is an absolute essential. Whether aged for one week or several months, dry-aged meat develops extraordinary tenderness and a rich, intense flavor, delivering a premium dining experience every time..



www.sub-equip.com

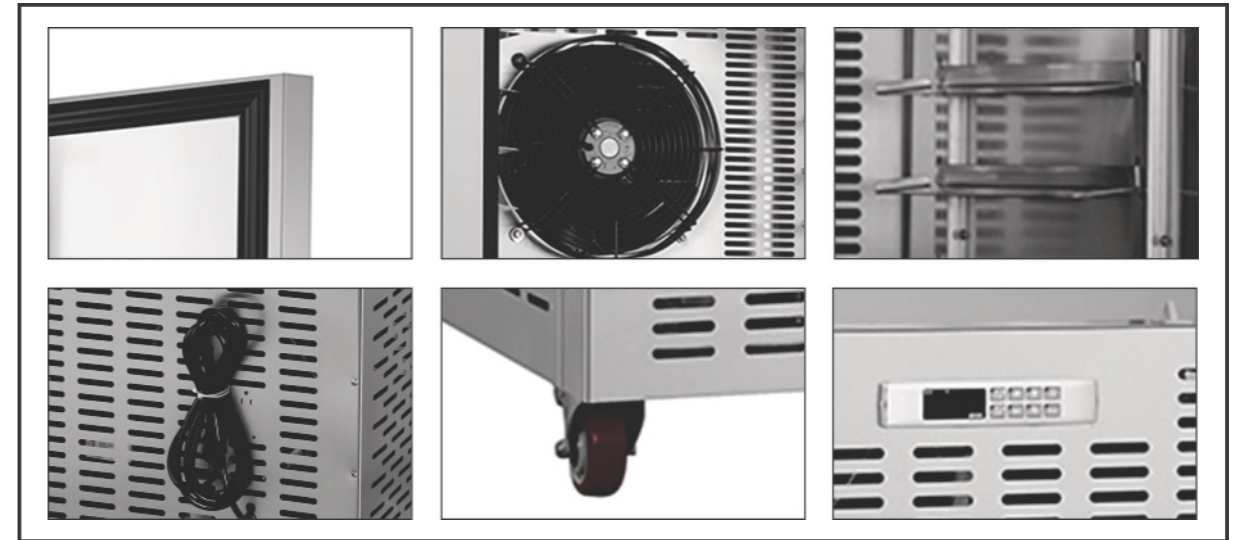


## Features

- This high volume dry aging cabinet can hold up to 200lbs of product each cabinet
- Equipped with a compressor fan cooling system & air purification.
- Energy efficient low-e triple pane glass doors
- UV sterilization lamp reduce bacterial
- Auto defrosting and auto evaporation to prevent condensation .
- Inset LED light to improve products visibility and display Interior construed from 304 stainless steel
- Exterior construed with 430 stainless steel
- Electronic thermostat and digital LED temperature display for accurate control and easy reading
- Humidity range: 50 to 80%
- Humidification method: fan +water box
- Temperature : 36 to 57°F / 2 to 14°C
- Electrical: 115/60/1 with NEMA 5-15P plug, 10ft cord
- R-290 refrigerant
- SGS & SGS Sanitation Certificate

Model	Doors	Exterior Dimensions (W x D x H)	Shelves	Voltage (V/Hz/Ph)	Amps	Power	NEMA PLUG	N.W	G.W	Packing Size (W x D x H)
C-27RGN	Refrigerator 1 Glass Doors	680 × 810 × 2053 mm 26.77 × 31.89 × 80.83"	4	115/60/1	6.5	650 W 0.88 HP	5-15P	163 kg 359 lbs	183 kg 403 lbs	710 × 890 × 2253 mm 27.95 × 35.04 × 88.74"
C-54RGN	Refrigerator 2 Glass Doors	1370 × 810 × 2053 mm 53.94 × 31.89 × 80.83"	8	115/60/1	7.5	800W 1.08 HP	5-15P	272 kg 598 lbs	306 kg 673 lbs	1430 × 890 × 2253 mm 56.30 × 35.04 × 88.74"

# BLAST CHILLER / FREEZER



**Blast Chiller: +70°C to +3°C in 90 Minutes**  
 Rapid cooling from +70°C to +3°C (158°F to 37.4°F) in just 90 minutes, quickly passing through the bacterial danger zone (+65°C to +10°C / 149°F to 50°F) to prevent bacterial growth and ensure food safety.  
 After blast chilling, food can be safely stored for up to 8 days in a standard chiller, preserving freshness, quality, and taste.



**Shock Freezer: +70°C to -18°C in ≤240 Minutes**  
 Rapid freezing from +70°C to -18°C (158°F to 0°F) in under 240 minutes, forming microcrystals that protect food cell structure, locking in freshness, flavor, and nutrients.  
 After shock freezing, food can be stored safely for months in a standard freezer with minimal quality loss.

## Features

- CFC Refrigerant and Foam
- Ventilated Refrigeration Compartment.
- Danfoss Refrigeration Components.
- Aspera Or Danfoss Compressor.
- Down to - 40°C (- 40°F)
- Exterior: Fully constructed with durable 430 Stainless Steel
- Internal: 304 Stainless Steel 304 With Round Internal Edges For Easy Cleaning
- Models are available to accommodate 5 full-size sheet pans (18" x 26")
- Self-Closing Doors with Easy to Clean
- Replace Magnetic Gasket.
- Precise Temperature Control: Mention the temperature range and its ability to maintain stable freezing conditions.
- 75mm thickness Insulation for Excellent Thermal Efficiency.
- Dixell Controller
- Electric Door Mullion Heater Replaceable
- SGS & SGS Sanitation Certificate.

Model	Doors	Exterior Dimensions (W x D x H)	Pans (GN 1/1) Not included	Voltage (V/Hz/Ph)	Amps	Power	NEMA PLUG	N.W	G.W	Packing Size (W x D x H)
CBF-5	1 Door	838 x 920 x 1205 mm 33.00 x 36.25 x 47.50"	5	115/60/1	14	1600 W 2.2 HP	5-20P	115 kg 253 lbs	135 kg 299 lbs	898 x 980 x 1255 mm 35.50 x 38.75 x 49.50"
CBF-10	1 Door	838 x 920 x 1595 mm 33.00 x 36.25 x 62.75"	10	115 /60/1	24	2800W 3.8 HP	DUAL 5-20P	155 kg 341 lbs	185 kg 407 lbs	898 x 980 x 1645 mm 35.50 x 38.75 x 65.00"

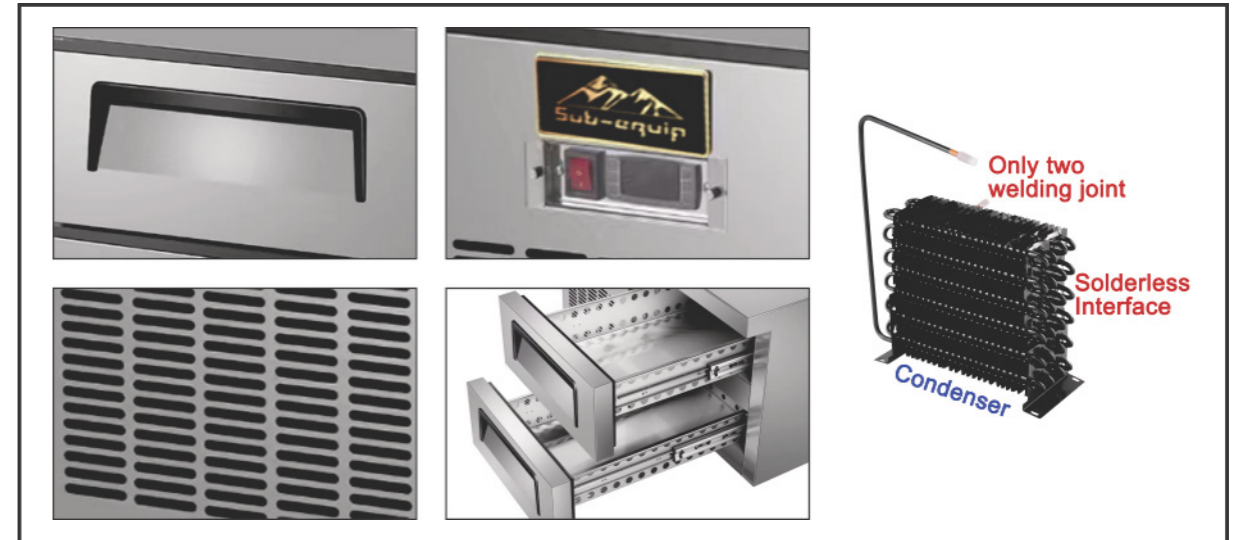


www.sub-equip.com

# CHEF BASE



www.sub-equip.com

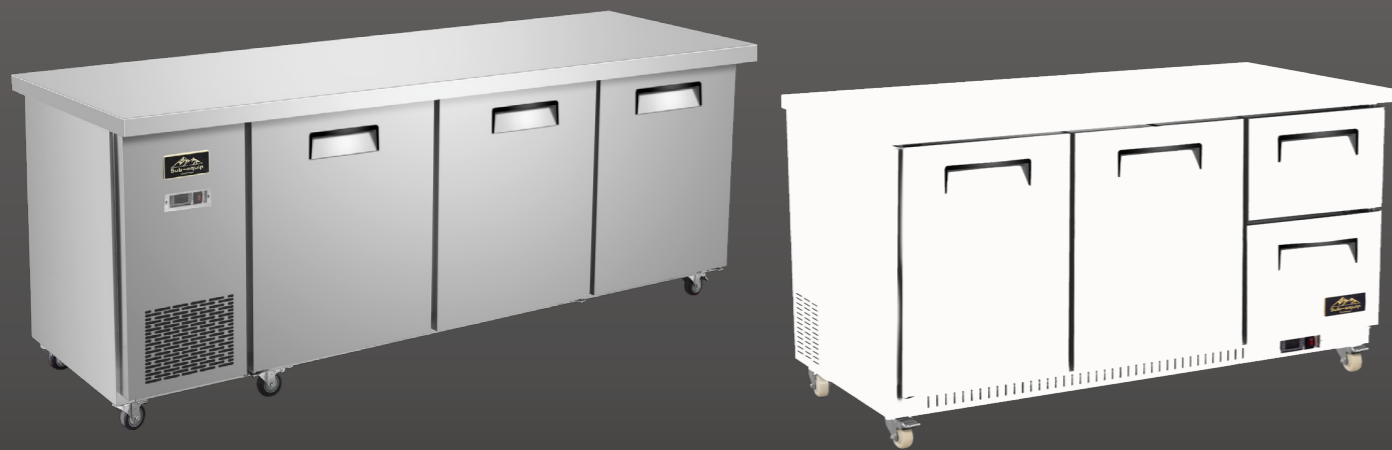


## Features

- CFC free refrigerant and foam insulation.
- Equipped with an electronic thermostat and digital LED temperature display for precise control and convenient reading.
- External 430 stainless steel.
- Internal: 304 stainless steel.
- Incorporates auto defrosting and auto evaporation mechanisms to prevent condensation.
- The coated copper tube, boasting a sturdy 0.7mm thickness, ensures durability.
- Crafted from a single bent tube, minimizing the risk of leaks with only two welding joints.
- The condenser is efficiently positioned inside the condensation pan to facilitate the evaporation of excess water.
- Comes with easy-to-mount 4" casters (front casters equipped with brakes), standard with all units.
- Interior temperature range: Refrigerator: 1°C to 6°C (33°F to 46°F)
- Interior temperature range: Freezer: -18°C to -22°C (0°F to -7°F)
- Electrical specifications: 115/60/1 with a NEMA 5-15P plug and a 10ft cord.
- R-290 refrigerant
- SGS & SGS Sanitation Certificate

Model	Doors	Exterior Dimensions (W x D x H)	Voltage (V/Hz/Ph)	Amps	Power	NEMA PLUG	N.W	G.W	Packing Size (W x D x H)
CCB-36-2D	Refrigerator 2 Drawers	965.2 × 800 × 572 mm 38.00 × 31.50 × 22.52"	115/60/1	3	300 W 0.41HP	5-15P	95 kg 210 lbs	125 kg 276 lbs	1037 x 945 x 772 mm 40.62 x 37.50 x 30.50"
CCB-48-2D	Refrigerator 2 Drawers	1270 × 800 × 572 mm 50.00 × 31.50 × 22.52"	115/60/1	5	500 W 0.68 HP	5-15P	115 kg 254 lbs	155 kg 342 lbs	1341 x 945 x 772 mm 52.62 x 37.50 x 30.50"
CCB-60-4D	Refrigerator 4 Drawers	1574.5 × 800 × 572 mm 61.99 × 31.50 × 22.52"	115/60/1	6.5	650 W 0.88 HP	5-15P	135 kg 298 lbs	180 kg 397 lbs	1645 x 945 x 772 mm 64.62 x 37.50 x 30.50"
CCB-72-4D	Refrigerator 4 Drawers	1879.6 × 800 × 572 mm 74.00 × 31.50 × 22.5"	115/60/1	6.5	650 W 0.88 HP	5-15P	150 kg 331 lbs	200 kg 441 lbs	1949 x 945 x 772 mm 76.62 x 37.50 x 30.50"
CCB-84-6D	Refrigerator 6 Drawers	2184.4 × 800 × 572 mm 86.00 × 31.50 × 22.52"	115/60/1	7.5	800 W 1.09 HP	5-15P	180 kg 397 lbs	230 kg 507 lbs	2253 x 945 x 772 mm 88.62 x 37.50 x 30.50"
CCB-96-6D	Refrigerator 6 Drawers	2489.2 × 800 × 572 mm 98.00 × 31.50 × 22.52"	115/60/1	7.5	800 W 1.09 HP	5-15P	200 kg 441 lbs	260 kg 574 lbs	2557 x 945 x 772 mm 100.62 x 37.50 x 30.50"

# UNDERCOUNTER REFRIGERATION



## Features

- CFC free refrigerant and foam insulation
- Electronic thermostat and digital LED temperature display for accurate control and easy reading
- Self-closing door
- Air outlet designed to promote uniform interior temperature within the cabinet
- The coated copper tube, boasting a sturdy 0.7mm thickness, ensures durability
- Crafted from a single bent tube, minimizing the risk of leaks with only two welding joints
- The condenser is efficiently positioned inside the condensation pan to facilitate the evaporation of excess water
- INTERIOR: 304 stainless steel
- EXTERIOR: 430 stainless steel
- Adjustable and heavy-duty epoxy-coated wire shelves for flexible storage options
- Easy to mount 4" casters (front casters with brakes) are standard with all units
- Electrical specifications: 115/60/1 with a NEMA 5-15P plug and a 10ft cord
- R-290 refrigerant
- SGS & SGS Sanitation Certificate



## Undercounter Refrigerator

- Interior temperature range: 1°C to 4°C ( 33°F to 40°F)

Model	Doors	Exterior Dimensions (W x D x H)	Shelves	Voltage (V/Hz/Ph)	Amps	Power	NEMA PLUG	N.W	G.W	Packing Size (W x D x H)
CUC-27	Refrigerator 1 Door	705 x 760 x 905 mm 27.75 x 30.00 x 35.62"	2	115/60/1	3	300 W 0.41HP	5-15P	64 kg 141 lbs	88 kg 194 lbs	816 x 855 x 990 mm 32.12 x 33.75 x 39.00"
CUC-29	Refrigerator 1 Door	734 x 760 x 905 mm 29.00 x 30.00 x 35.62"	2	115/60/1	3	300 W 0.41HP	5-15P	66 kg 146 lbs	91 kg 200 lbs	846 x 855 x 990 mm 33.38 x 33.75 x 39.00"
CUC-36	Refrigerator 2 Doors	920 x 760 x 905 mm 36.25 x 30.00 x 35.62"	4	115/60/1	3	300 W 0.41HP	5-15P	81.5 kg 179 lbs	114 kg 251 lbs	1001 x 855 x 990 mm 39.50 x 33.75 x 39.00"
CUC-48	Refrigerator 2 Doors	1225 x 760 x 905 mm 48.25 x 30.00 x 35.62"	4	115/60/1	4	400 W 0.54 HP	5-15P	85.5 kg 188 lbs	134 kg 295 lbs	1306 x 855 x 990 mm 51.50 x 33.75 x 39.00"
CUC-60	Refrigerator 2 Doors	1524 x 760 x 905 mm 60.00 x 30.00 x 35.62"	4	115/60/1	4	400 W 0.54 HP	5-15P	108 kg 238 lbs	157kg 346 lbs	1636 x 855 x 990 mm 64.50 x 33.75 x 39.00"
CUC-72	Refrigerator 3 Doors	1822 x 760 x 905 mm 71.75 x 30.00 x 35.62"	6	115/60/1	4.5	450 W 0.61 HP	5-15P	135 kg 297 lbs	180 kg 396 lbs	1904 x 855 x 990 mm 75.00 x 33.75 x 39.00"

## Undercounter Freezer

- Interior temperature range: -18°C to -22°C ( 0°F to -7°F)

Model	Doors	Exterior Dimensions (W x D x H)	Shelves	Voltage (V/Hz/Ph)	Amps	Power	NEMA PLUG	N.W	G.W	Packing Size (W x D x H)
CUC-27F	Freezer 1 Door	705 x 760 x 905 mm 27.75 x 30.00 x 35.62"	2	115/60/1	3	300 W 0.41HP	5-15P	64 kg 141 lbs	88 kg 194 lbs	816 x 855 x 990 mm 32.12 x 33.75 x 39.00"
CUC-29F	Freezer 1 Door	734 x 760 x 905 mm 29.00 x 30.00 x 35.62"	2	115/60/1	3	300 W 0.41HP	5-15P	66 kg 146 lbs	91 kg 200 lbs	846 x 855 x 990 mm 33.38 x 33.75 x 39.00"
CUC-36F	Freezer 2 Doors	920 x 760 x 905 mm 36.25 x 30.00 x 35.62"	4	115/60/1	3	300 W 0.41HP	5-15P	81.5 kg 179 lbs	114 kg 251 lbs	1001 x 855 x 990 mm 39.50 x 33.75 x 39.00"
CUC-48F	Freezer 2 Doors	1225 x 760 x 905 mm 48.25 x 30.00 x 35.62"	4	115/60/1	4	400 W 0.54 HP	5-15P	85.5 kg 188 lbs	134 kg 295 lbs	1306 x 855 x 990 mm 51.50 x 33.75 x 39.00"
CUC-60F	Freezer 2 Doors	1524 x 760 x 905 mm 60.00 x 30.00 x 35.62"	4	115/60/1	5.5	550 W 0.75 HP	5-15P	108 kg 238 lbs	157kg 346 lbs	1636 x 855 x 990 mm 64.50 x 33.75 x 39.00"
CUC-72F	Freezer 3 Doors	1822 x 760 x 905 mm 71.75 x 30.00 x 35.62"	6	115/60/1	5.5	550 W 0.75 HP	5-15P	135 kg 297 lbs	180 kg 396 lbs	1904 x 855 x 990 mm 75.00 x 33.75 x 39.00"



### Undercounter Refrigerator with side compressor

- Interior temperature range: 1°C to 4°C ( 33°F to 40°F)

Model	Doors	Exterior Dimensions (W x D x H)	Shelves	Voltage (V/Hz/Ph)	Amps	Power	NEMA PLUG	N.W	G.W	Packing Size (W x D x H)
CUSC-48	Refrigerator 1 Door	1220 x 800 x 905 mm 48.00 x 31.50 x 35.62"	2	115/60/1	4	400 W 0.54 HP	5-15P	85 kg 188 lbs	128 kg 283 lbs	1304 x 895 x 995 mm 51.38 x 35.25 x 39.25"
CUSC-60	Refrigerator 2 Doors	1524 x 800 x 905 mm 60.00 x 31.50 x 35.62"	4	115/60/1	4	400 W 0.54 HP	5-15P	110 kg 243 lbs	128 kg 283 lbs	1614 x 895 x 995 mm 63.50 x 35.25 x 39.25"
CUSC-72	Refrigerator 2 Doors	1828 x 800 x 905 mm 72.00 x 31.50 x 35.62"	4	115/60/1	4.5	450 W 0.61 HP	5-15P	135 kg 297 lbs	185 kg 407 lbs	1915 x 895 x 995 mm 75.50 x 35.25 x 39.25"
CUSC-84	Refrigerator 3 Doors	2134 x 800 x 905 mm 84.00 x 31.50 x 35.62"	6	115/60/1	5.5	550 W 0.75 HP	5-15P	143 kg 315 lbs	209 kg 460 lbs	2224 x 895 x 995 mm 87.50 x 35.25 x 39.25"
CUSC-96	Refrigerator 3 Doors	2438 x 800 x 905 mm 96.00 x 31.50 x 35.62"	6	115/60/1	6	600 W 0.81 HP	5-15P	165 kg 363 lbs	225 kg 495 lbs	2528 x 895 x 995 mm 99.50 x 35.25 x 39.25"

### Undercounter Freezer with side compressor

- Interior temperature range: -18°C to -22°C ( 0°F to -7°F)

Model	Doors	Exterior Dimensions (W x D x H)	Shelves	Voltage (V/Hz/Ph)	Amps	Power	NEMA PLUG	N.W	G.W	Packing Size (W x D x H)
CUSC-48F	Freezer 1 Door	1220 x 800 x 905 mm 48.00 x 31.50 x 35.62"	2	115/60/1	4	400 W 0.54 HP	5-15P	85 kg 188 lbs	128 kg 283 lbs	1304 x 895 x 995 mm 51.38 x 35.25 x 39.25"
CUSC-60F	Freezer 2 Doors	1524 x 800 x 905 mm 60.00 x 31.50 x 35.62"	4	115/60/1	4.5	450 W 0.61 HP	5-15P	110 kg 243 lbs	128 kg 283 lbs	1614 x 895 x 995 mm 63.50 x 35.25 x 39.25"
CUSC-72F	Freezer 2 Doors	1828 x 800 x 905 mm 72.00 x 31.50 x 35.62"	4	115/60/1	5.5	550 W 0.75 HP	5-15P	135 kg 297 lbs	185 kg 407 lbs	1915 x 895 x 995 mm 75.50 x 35.25 x 39.25"
CUSC-84F	Freezer 3 Doors	2134 x 800 x 905 mm 84.00 x 31.50 x 35.62"	6	115/60/1	7	700W 0.95 HP	5-15P	143 kg 315 lbs	209 kg 460 lbs	2224 x 895 x 995 mm 87.50 x 35.25 x 39.25"
CUSC-96F	Freezer 3 Doors	2438 x 800 x 905 mm 96.00 x 31.50 x 35.62"	6	115/60/1	7.5	800 W 1.09 HP	5-15P	165 kg 363 lbs	225 kg 495 lbs	2528 x 895 x 995 mm 99.50 x 35.25 x 39.25"

# BACK BAR REFRIGERATOR



## Stainless steel solid door back bar refrigerator



### Features

- 1-1/2" thick stainless steel countertop with stainless steel interior and exterior
- LED interior lighting
- Doors have lock and key
- Adjustable, heavy-duty epoxy coated wire shelves (two per door)
- Electronic thermostat and digital LED temperature display for accurate control and easy reading
- Easy to mount 5.6" casters (front casters with brakes) are standard with all units
- Electrical specifications: 115/60/1 with a NEMA 5-15P plug and a 10ft cord
- R-290 refrigerant
- SGS & SGS Sanitation Certificate

- Interior temperature range: 1°C to 4°C ( 33°F to 40°F)

Model	Doors	Exterior Dimensions (W x D x H)	Shelves	Voltage (V/Hz/Ph)	Amps	Power	NEMA PLUG	N.W	G.W	Packing Size (W x D x H)
CBB27-48-2HS-S	2 Doors	1219 x 699 x 1057 mm 48 x 27.5 x 41.6"	4	115/60/1	4.5	450 W 0.61 HP	5-15P	108 kg 238 lbs	161 kg 354 lbs	1279 x 817 x 1260 50.35 x 32.17 x 49.61"
CBB27-60-2HS-S	2 Doors	1524 x 699 x 1057 mm 60 x 27.5 x 41.6"	4	115/60/1	5	500 W 0.68 HP	5-15P	120 kg 264 lbs	181 kg 399 lbs	1584 x 817 x 1260 62.36 x 32.17 x 49.61"
CBB27-72-3HS-S	3 Doors	1829 x 699 x 1057 mm 72 x 27.5 x 41.6"	6	115/60/1	5.5	600 W 0.81 HP	5-15P	138.5 kg 305 lbs	204 kg 449 lbs	1889 x 817 x 1260 74.37 x 32.17 x 49.61"

## Stainless steel Glass door back bar refrigerator



- Interior temperature range: 1°C to 4°C ( 33°F to 40°F)

Model	Doors	Exterior Dimensions (W x D x H)	Shelves	Voltage (V/Hz/Ph)	Amps	Power	NEMA PLUG	N.W	G.W	Packing Size (W x D x H)
CBB27-48-2HG-S	2 Doors	1219 x 699 x 1057 mm 48 x 27.5 x 41.6"	4	115/60/1	4.5	500 W 0.68 HP	5-15P	122.5 kg 269 lbs	175 kg 385 lbs	1279 x 817 x 1260 50.35 x 32.17 x 49.61"
CBB27-60-2HG-S	2 Doors	1524 x 699 x 1057 mm 60 x 27.5 x 41.6"	4	115/60/1	5	550 W 0.75 HP	5-15P	138.5 kg 305 lbs	199 kg 438 lbs	1584 x 817 x 1260 62.36 x 32.17 x 49.61"
CBB27-72-3HG-S	3 Doors	1829 x 699 x 1057 mm 72 x 27.5 x 41.6"	6	115/60/1	5.5	700 W 0.94 HP	5-15P	161.5 kg 356 lbs	229 kg 504 lbs	1889 x 817 x 1260 74.37 x 32.17 x 49.61"

## Stainless steel Glass door back bar refrigerator -Electroplated Stainless Steel Exterior



- Interior temperature range: 1°C to 4°C ( 33°F to 40°F)

Model	Doors	Exterior Dimensions (W x D x H)	Shelves	Voltage (V/Hz/Ph)	Amps	Power	NEMA PLUG	N.W	G.W	Packing Size (W x D x H)
CBB27-48-2HG-C	2 Doors	1219 x 699 x 1057 mm 48 x 27.5 x 41.6"	4	115/60/1	4.5	500 W 0.68 HP	5-15P	122.5 kg 269 lbs	175 kg 385 lbs	1279 x 817 x 1260 50.35 x 32.17 x 49.61"
CBB27-60-2HG-C	2 Doors	1524 x 699 x 1057 mm 60 x 27.5 x 41.6"	4	115/60/1	5	550 W 0.75 HP	5-15P	138.5 kg 305 lbs	199 kg 438 lbs	1584 x 817 x 1260 62.36 x 32.17 x 49.61"
CBB27-72-3HG-C	3 Doors	1829 x 699 x 1057 mm 72 x 27.5 x 41.6"	6	115/60/1	5.5	700 W 0.94 HP	5-15P	161.5 kg 356 lbs	229 kg 504 lbs	1889 x 817 x 1260 74.37 x 32.17 x 49.61"

## Stainless steel Black door back bar refrigerator -Swing Door



- Interior temperature range: 1°C to 4°C ( 33°F to 40°F)

Model	Doors	Exterior Dimensions (W x D x H)	Shelves	Voltage (V/Hz/Ph)	Amps	Power	NEMA PLUG	N.W	G.W	Packing Size (W x D x H)
CBB27-48-2HG-B	2 Doors	1219 x 699 x 1057 mm 48 x 27.5 x 41.6"	4	115/60/1	4.5	500 W 0.68 HP	5-15P	122.5 kg 269 lbs	175 kg 385 lbs	1279 x 817 x 1260 50.35 x 32.17 x 49.61"
CBB27-60-2HG-B	2 Doors	1524 x 699 x 1057 mm 60 x 27.5 x 41.6"	4	115/60/1	5	550 W 0.75 HP	5-15P	138.5 kg 305 lbs	199 kg 438 lbs	1584 x 817 x 1260 62.36 x 32.17 x 49.61"
CBB27-72-3HG-B	3 Doors	1829 x 699 x 1057 mm 72 x 27.5 x 41.6"	6	115/60/1	5.5	700 W 0.94 HP	5-15P	161.5 kg 356 lbs	229 kg 504 lbs	1889 x 817 x 1260 74.37 x 32.17 x 49.61"

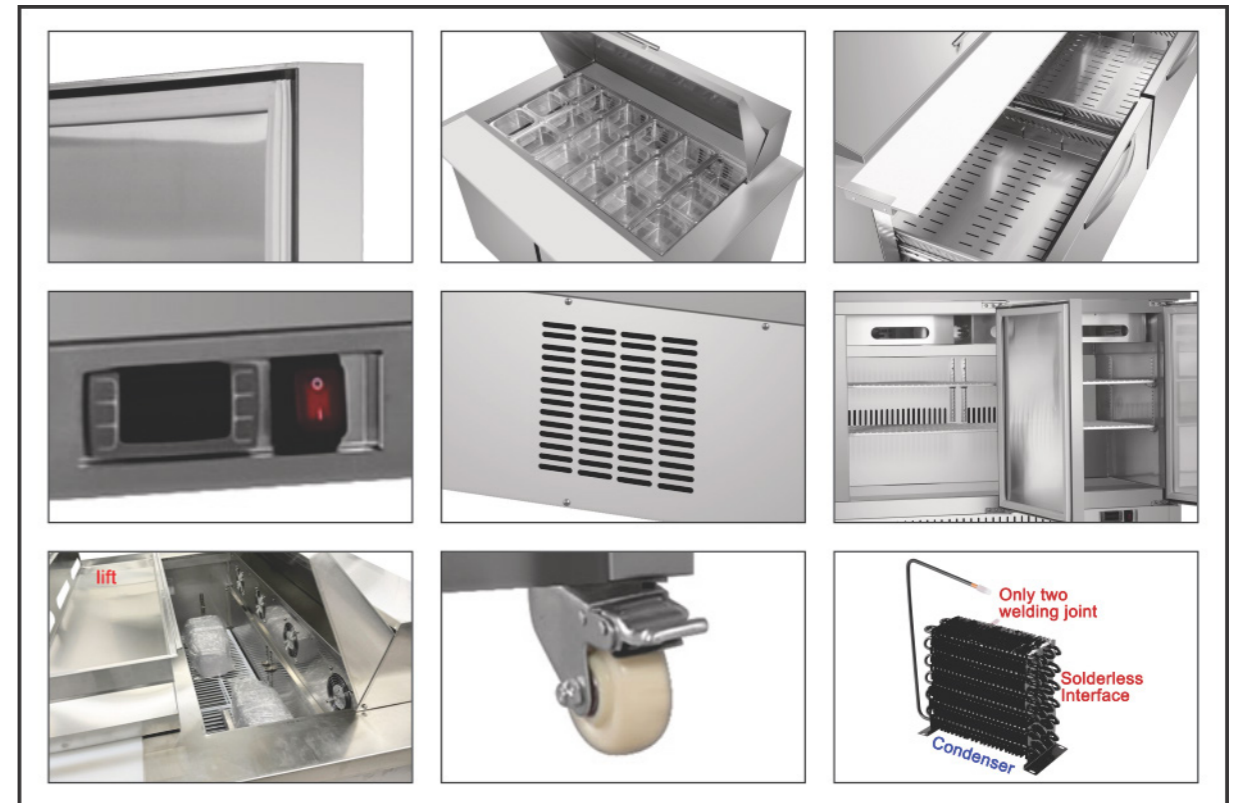
## Stainless steel Black door back bar refrigerator -Sliding Door



- Interior temperature range: 1°C to 4°C ( 33°F to 40°F)

Model	Doors	Exterior Dimensions (W x D x H)	Shelves	Voltage (V/Hz/Ph)	Amps	Power	NEMA PLUG	N.W	G.W	Packing Size (W x D x H)
CBB27-48-2SD-B	2 Doors	1219 x 699 x 1057 mm 48 x 27.5 x 41.6"	4	115/60/1	4.5	500 W 0.68 HP	5-15P	122.5 kg 269 lbs	175 kg 385 lbs	1279 x 817 x 1260 50.35 x 32.17 x 49.61"
CBB27-60-2SD-B	2 Doors	1524 x 699 x 1057 mm 60 x 27.5 x 41.6"	4	115/60/1	5	550 W 0.75 HP	5-15P	138.5 kg 305 lbs	199 kg 438 lbs	1584 x 817 x 1260 62.36 x 32.17 x 49.61"
CBB27-72-3SD-B	3 Doors	1829 x 699 x 1057 mm 72 x 27.5 x 41.6"	6	115/60/1	5.5	700 W 0.94 HP	5-15P	161.5 kg 356 lbs	229 kg 504 lbs	1889 x 817 x 1260 74.37 x 32.17 x 49.61"

# SALAD & SANDWICH PRE TABLE REFRIGERATOR



## Features

- CFC free refrigerant and foam insulation
- Electronic thermostat and digital LED temperature display for accurate control and easy reading
- Self-Closing Swing Door
- Magnetic gasket can be replaced without any tools
- External: 430 Stainless Steel framework construction
- Internal: 304 Stainless Steel
- Auto defrosting and auto evaporation to prevent condensation
- The coated copper tube, with a robust 0.7mm thickness, ensures durability.
- Crafted from a single bent tube, it has only two welding joints, reducing the risk of leaks
- Condensor sits inside the condensation pan efficiently evaporates excess water
- Adjustable, heavy-duty epoxy coated wire shelves
- 1/6 size Polycarbonate GN pan and plastic cutting board included
- Easy to mount 4" casters (front casters with brakes) are standard with all units
- Electrical: 115/60/1 with NEMA 5-15P plug, 10ft cord
- R-290 refrigerant
- SGS & SGS Sanitation Certificate

## Salad & Sandwich Pre Table Refrigerator-Regular Top



- Interior temperature range: 1°C to 4°C ( 33°F to 40°F)
- Cutting Board Depth: 279 mm (11")



Model	Doors	1/6 Size Pan Capacity	Exterior Dimensions (W x D x H)	Shelves	Voltage (V/Hz/Ph)	Amps	Power	NEMA PLUG	N.W	G.W	Packing Size (W x D x H)
CSSU-29	1 Door	8	736 x 812 x 905 or 1079 mm 29.00 x 32.00 x 35.62 or 42.50"	2	115/60/1	3	300 W 0.41HP	5-15P	70 kg 155 lbs	101 kg 223 lbs	816 x 855 x 1145 mm 32.12 x 33.50 x 45.00"
CSSU-36	2 Doors	10	920 x 812 x 905 or 1079 mm 36.25 x 32.00 x 35.62 or 42.50"	4	115/60/1	3	300 W 0.41HP	5-15P	79.5 kg 175 lbs	110 kg 243 lbs	1001 x 855 x 1145 mm 39.50 x 33.50 x 45.00"
CSSU-48	2 Doors	12	1227 x 812 x 905 or 1079 mm 48.25 x 32.00 x 35.62 or 42.50"	4	115/60/1	4	400 W 0.54 HP	5-15P	100 kg 220 lbs	130 kg 286 lbs	1306 x 855 x 1145 mm 51.50 x 33.50 x 45.00"
CSSU-60	2 Doors	16	1526 x 812 x 905 or 1079 mm 60.00 x 32.00 x 35.62 or 42.50"	4	115/60/1	4	400 W 0.54 HP	5-15P	119 kg 262 lbs	178 kg 392 lbs	1636 x 855 x 1145 mm 65.00 x 33.50 x 45.00"
CSSU-72	3 Doors	20	1824 x 812 x 905 or 1079 mm 71.88 x 32.00 x 35.62 or 42.50"	6	115/60/1	4.5	450 W 0.61 HP	5-15P	164 kg 360 lbs	206 kg 454 lbs	1904 x 855 x 1145 mm 75.00 x 33.50 x 45.00"

## Salad & Sandwich Pre Table Refrigerator-Mega Top



- Interior temperature range: 1°C to 4°C ( 33°F to 40°F)
- Cutting Board Depth: 228 mm (9")



Model	Doors	1/6 Size Pan Capacity	Exterior Dimensions (W x D x H)	Shelves	Voltage (V/Hz/Ph)	Amps	Power	NEMA PLUG	N.W	G.W	Packing Size (W x D x H)
CSSU-29M	1 Door	12	736 x 926 x 905 or 1117 mm 29.00 x 36.50 x 35.62 or 44.00"	2	115/60/1	3	300 W 0.41HP	5-15P	72 kg 158 lbs	111 kg 244 lbs	816 x 945 x 1210 mm 32.12 x 37.25 x 47.75"
CSSU-36M	2 Doors	15	920 x 926 x 905 or 1117 mm 36.25 x 36.50 x 35.62 or 44.00"	4	115/60/1	3	300 W 0.41HP	5-15P	79.5 kg 175 lbs	110 kg 243 lbs	1001 x 945 x 1210 mm 39.50 x 37.25 x 47.75"
CSSU-48M	2 Doors	18	1227 x 926 x 905 or 1117 mm 48.25 x 36.50 x 35.62 or 44.00"	4	115/60/1	4	400 W 0.54 HP	5-15P	100 kg 220 lbs	145 kg 319 lbs	1306 x 945 x 1210 mm 51.50 x 37.25 x 47.75"
CSSU-60M	2 Doors	24	1526 x 926 x 905 or 1117 mm 60.00 x 36.50 x 35.62 or 44.00"	4	115/60/1	4	400 W 0.54 HP	5-15P	143 kg 315 lbs	194kg 427 lbs	1636 x 945 x 1210 mm 65.00 x 37.25 x 47.75"
CSSU-72M	3 Doors	30	1824 x 926 x 905 or 1117 mm 71.88 x 36.50 x 35.62 or 44.00"	6	115/60/1	4.5	450 W 0.61 HP	5-15P	157kg 346 lbs	220 kg 485 lbs	1904 x 945 x 1210 mm 75.00 x 37.25 x 47.75"

## Salad & Sandwich Pre Table Refrigerator - Regular Top with side mounted compressor

- Interior temperature range: 1°C to 4°C ( 33°F to 40°F)
- Cutting Board Depth: 279 mm (11")



Model	Doors	1/6 Size Pan Capacity	Exterior Dimensions (W x D x H)	Shelves	Voltage (V/Hz/Ph)	Amps	Power	NEMA PLUG	N.W	G.W	Packing Size (W x D x H)
CUSC-48R	1 Door	12	1222 x 837 x 905 or 1079 mm 48.12 x 33.00 x 35.62 or 42.50"	2	115/60/1	4	400 W 0.54 HP	5-15P	95 kg 209 lbs	135 kg 297 lbs	1304 x 910 x 1165 mm 51.50 x 36.00 x 45.50"
CUSC-60R	2 Doors	16	1526 x 837 x 905 or 1079 mm 60.00 x 33.00 x 35.62 or 42.50"	4	115/60/1	4.5	450 W 0.61 HP	5-15P	120 kg 264 lbs	160 kg 352 lbs	1614 x 910 x 1165 mm 63.50 x 36.00 x 45.50"
CUSC-72R	2 Doors	20	1830 x 837 x 905 or 1079 mm 72.00 x 33.00 x 35.62 or 42.50"	4	115/60/1	5	500 W 0.68 HP	5-15P	145 kg 319 lbs	190 kg 418 lbs	1919 x 910 x 1165 mm 75.50 x 36.00 x 45.50"
CUSC-84R	3 Doors	22	2136 x 837 x 905 or 1079 mm 84.00 x 33.00 x 35.62 or 42.50"	6	115/60/1	5.5	550 W 0.75 HP	5-15P	165 kg 363 lbs	205 kg 451 lbs	2224 x 910 x 1165 mm 87.50 x 36.00 x 45.50"
CUSC-96R	3 Doors	26	2440 x 837 x 905 or 1079 mm 96.00 x 33.00 x 35.62 or 42.50"	6	115/60/1	6	600 W 0.81 HP	5-15P	190 kg 418 lbs	230 kg 506 lbs	2528 x 910 x 1165 mm 99.50 x 36.00 x 45.50"



## Salad & Sandwich Pre Table Refrigerator - Mega Top with side mounted compressor

- Interior temperature range: 1°C to 4°C ( 33°F to 40°F)
- Cutting Board Depth: 228 mm (9")



Model	Doors	1/6 Size Pan Capacity	Exterior Dimensions (W x D x H)	Shelves	Voltage (V/Hz/Ph)	Amps	Power	NEMA PLUG	N.W	G.W	Packing Size (W x D x H)
CUSC-48M	1 Door	18	1222 x 926 x 905 or 1117 mm 48.12 x 36.50 x 35.62 or 44.00"	2	115/60/1	4	400 W 0.54 HP	5-15P	105 kg 231 lbs	150 kg 330 lbs	1304 x 945 x 1210 mm 51.50 x 37.25 x 47.75"
CUSC-60M	2 Doors	24	1526 x 926 x 905 or 1117 mm 60.00 x 36.50 x 35.62 or 44.00"	4	115/60/1	4.5	450 W 0.61 HP	5-15P	130 kg 286 lbs	175 kg 385 lbs	1614 x 945 x 1210 mm 63.50 x 37.25 x 47.75"
CUSC-72M	2 Doors	30	1830 x 926 x 905 or 1117 mm 72.00 x 36.50 x 35.62 or 44.00"	4	115/60/1	5	500 W 0.68 HP	5-15P	155 kg 341 lbs	200 kg 440 lbs	1919 x 945 x 1210 mm 75.50 x 37.25 x 47.75"
CUSC-84M	3 Doors	33	2136 x 926 x 905 or 1117 mm 84.00 x 36.50 x 35.62 or 44.00"	6	115/60/1	5.5	550 W 0.75 HP	5-15P	175 kg 385 lbs	215 kg 473 lbs	2224 x 945 x 1210 mm 87.50 x 37.25 x 47.75"
CUSC-96M	3 Doors	39	2440 x 926 x 905 or 1117 mm 96.00 x 36.50 x 35.62 or 44.00"	6	115/60/1	6	600 W 0.81 HP	5-15P	200 kg 440 lbs	240 kg 528 lbs	2528 x 945 x 1210 mm 99.50 x 37.25 x 47.75"





www.sub-equip.com

# SALAD & SANDWICH PRE TABLE WITH SNEEZE GLASS REFRIGERATOR



## Features

- Built-in 19" high sneeze guard constructed from tempered glass on 3 sides with a stainless steel frame and flat top Comes with 1/6 size 4" deep pans and adapter bars, unit can accommodate pans that are 6" deep
- External construction comprises stainless steel framework.
- Internally constructed with 304 stainless steel.
- Drawers are designed to fit a standard full size 1/1 pan
- Incorporates auto defrosting and auto evaporation mechanisms to prevent condensation.
- The coated copper tube, boasting a sturdy 0.7mm thickness, ensures durability. -Crafted from a single bent tube, minimizing the risk of leaks with only two welding joints.
- The condenser is efficiently positioned inside the condensation pan to facilitate the evaporation of excess water.
- Adjustable and heavy-duty epoxy-coated wire shelves for flexible storage options.
- Includes 1/6 size polycarbonate GN pans and 8 5/8" plastic cutting board.
- Comes with easy-to-mount 4" casters (front casters equipped with brakes), standard with all units.
- Electrical specifications: 115/60/1 with a NEMA 5-15P plug and a 10ft cord.
- R-290 refrigerant
- SGS & SGS Sanitation Certificate



www.sub-equip.com



- Interior temperature range: 1°C to 4°C ( 33°F to 40°F)
- Cutting Board Depth: 219 mm (8.6")

Model	Doors & Drawers	1/6 Size Pan Capacity	Exterior Dimensions (W x D x H)	Shelves	Voltage (V/Hz/Ph)	Amps	Power	N.W	G.W	Packing Size (W x D x H)
CSSU-S60MG	2 Doors	24	1526 x 877 x 905 or 1387 mm 60.00 x 34.50 x 35.62 or 54.62"	4	115/60/1	4.5	450 W 0.61 HP	150 kg 331 lbs	215 kg 474 lbs	1610 x 905 x 1473 mm 63.50 x 35.62 x 58.00"
CSSU-S60MG-2D	1 Door & 2 Drawers	24	1526 x 877 x 905 or 1387 mm 60.00 x 34.50 x 35.62 or 54.62"	2	115/60/1	4.5	450 W 0.61 HP	165 kg 364 lbs	230 kg 507 lbs	1610 x 905 x 1473 mm 63.50 x 35.62 x 58.00"
CSSU-S60MG-4D	4 Drawers	24	1526 x 877 x 905 or 1387 mm 60.00 x 34.50 x 35.62 or 54.62"	0	115/60/1	4.5	450 W 0.61 HP	180 kg 397 lbs	245 kg 540 lbs	1610 x 905 x 1473 mm 63.50 x 35.62 x 58.00"
CSSU-S72MG	2 Doors	30	1830 x 877 x 905 or 1387 mm 72.00 x 34.50 x 35.62 or 54.62"	4	115/60/1	5	500 W 0.68 HP	195 kg 430 lbs	275 kg 607 lbs	1915 x 905 x 1473 mm 75.50 x 35.62 x 58.00"
CSSU-S72MG-2D	1 Doors & 2 Drawers	30	1830 x 877 x 905 or 1387 mm 72.00 x 34.50 x 35.62 or 54.62"	2	115/60/1	5	500 W 0.68 HP	210 kg 430 lbs	253 kg 577 lbs	1915 x 905 x 1473 mm 75.50 x 35.62 x 58.00"
CSSU-S72MG-4D	4 Drawers	30	1830 x 877 x 905 or 1387 mm 72.00 x 34.50 x 35.62 or 54.62"	0	115/60/1	5	500 W 0.68 HP	225 kg 496 lbs	275 kg 607 lbs	1915 x 905 x 1473 mm 75.50 x 35.62 x 58.00"
CSSU-S84MG	3 Doors	36	2136 x 877 x 905 or 1387 mm 84.00 x 34.50 x 35.62 or 54.62"	6	115/60/1	5.5	550 W 0.75 HP	210 kg 463 lbs	290 kg 640 lbs	2220 x 905 x 1473 mm 87.50 x 35.62 x 58.00"
CSSU-S84MG-2D	2 Doors & 2 Drawers	36	2136 x 877 x 905 or 1387 mm 84.00 x 34.50 x 35.62 or 54.62"	4	115/60/1	5.5	550 W 0.75 HP	240 kg 529 lbs	290kg 639lbs	2220 x 905 x 1473 mm 87.50 x 35.62 x 58.00"
CSSU-S84MG-4D	1 Doors & 4 Drawers	36	2136 x 877 x 905 or 1387 mm 84.00 x 34.50 x 35.62 or 54.62"	2	115/60/1	5.5	550 W 0.75 HP	255 kg 562 lbs	335 kg 739 lbs	2220 x 905 x 1473 mm 87.50 x 35.62 x 58.00"
CSSU-S84MG-6D	6 Drawers	36	2136 x 877 x 905 or 1387 mm 84.00 x 34.50 x 35.62 or 54.62"	0	115/60/1	5.5	550 W 0.75 HP	270 kg 596 lbs	350 kg 772 lbs	2220 x 905 x 1473 mm 87.50 x 35.62 x 58.00"
CSSU-S96MG	3 Doors	42	2440 x 877 x 905 or 1387 mm 96.00 x 34.50 x 35.62 or 54.62"	6	115/60/1	6	600 W 0.81 HP	260 kg 572 lbs	340 kg 748 lbs	2524 x 905 x 1473 mm 99.38 x 35.62 x 58.00"
CSSU-S96MG-2D	2 Doors & 2 Drawers	42	2440 x 877 x 905 or 1387 mm 96.00 x 34.50 x 35.62 or 54.62"	4	115/60/1	6	600 W 0.81 HP	270 kg 596 lbs	350 kg 772 lbs	2524 x 905 x 1473 mm 99.38 x 35.62 x 58.00"
CSSU-S96MG-4D	1 Doors & 4 Drawers	42	2440 x 877 x 905 or 1387 mm 96.00 x 34.50 x 35.62 or 54.62"	2	115/60/1	6	600 W 0.81 HP	285 kg 629 lbs	365 kg 805 lbs	2524 x 905 x 1473 mm 99.38 x 35.62 x 58.00"
CSSU-S96MG-6D	6 Drawers	42	2440 x 877 x 905 or 1387 mm 96.00 x 34.50 x 35.62 or 54.62"	0	115/60/1	6	600 W 0.81 HP	300 kg 662 lbs	380 kg 838 lbs	2524 x 905 x 1473 mm 99.38 x 35.62 x 58.00"



www.sub-equip.com

# SALAD & SANDWICH PREP TABLE -MARBLE COUNTERTOP



## Features

- Premium Construction: Built with heavy-duty marble countertop for a clean, upscale, and professional look.
- Glass Sneeze Guard Display with led light: Clear, durable glass construction provides excellent visibility and hygiene protection.
- Reinforced 8" Wide Edge: Provides added workspace, superior stability, and a polished finish designed for busy commercial kitchens.
- Refrigerated Pan Well: Multi-slot top accommodates a variety of food pans—ideal for salad bars, cold toppings, dessert stations, pizza prep, and deli service.
- Commercial-Grade Stainless Steel: Exterior made from 430 stainless steel; interior built with 304 stainless steel for long-lasting durability and hygiene.
- Efficient Refrigeration: CFC-free refrigerant, thick foam insulation, auto defrosting, and auto evaporation system to prevent condensation.
- Easy Operation & Mobility: Self-closing swing door, adjustable epoxy-coated shelves, and 4" casters with front brakes for effortless movement.
- Clean & Low Maintenance: Smooth marble surfaces are easy to wipe down—ideal for high-volume foodservice environments.
- Electrical specifications: 115/60/1 with a NEMA 5-15P plug and a 10ft cord.
- R-290 refrigerant
- Certified Safe: SGS & SGS Sanitation certified for professional commercial kitchen use.



www.sub-equip.com



- Interior temperature range: -2.2°C to 0.6°C ( 28°F to 33°F)

Model	Doors	Exterior Dimensions (W x D x H)	Shelves	Voltage (V/Hz/Ph)	Amps	Power	NEMA PLUG	N.W	G.W	Packing Size (W x D x H)
CSSU-48M-BM	2 Doors	1224.6 x 1013.6 x 1512.9 mm 48.2 x 39.9 x 59.6"	4	115/60/1	6	528 W 0.71 HP	5-15P	161 kg 354.9 lbs	260 kg 573.2 lbs	1305 x 1103 x 1665 mm 51.38 x 43.43 x 65.55"
CSSU-60M-BM	2 Doors	1524 x 1013.6 x 1512.9 mm 60 x 39.9 x 59.6"	4	115/60/1	6.5	530 W 0.71 HP	5-15P	201 kg 443.1 lbs	291 kg 641.5 lbs	1605 x 1103 x 1665 mm 63.19 x 43.43 x 65.55"
CSSU-72M-BM	3 Doors	1821.6 x 1013.6 x 1512.9 mm 71.7 x 39.9 x 59.6"	6	115/60/1	7.5	810 W 1.09 HP	5-15P	208 kg 458.6lbs	315 kg 694.5 lbs	1910 x 1103 x 1665 mm 75.20 x 43.43 x 65.55"



- Interior temperature range: -2.2°C to 0.6°C ( 28°F to 33°F)

Model	Doors	Exterior Dimensions (W x D x H)	Shelves	Voltage (V/Hz/Ph)	Amps	Power	NEMA PLUG	N.W	G.W	Packing Size (W x D x H)
CSSU-48M-SV	2 Doors	1224.6 x 906 x 1532.6 mm 48.2 x 35.6 x 60.4"	4	115/60/1	6	528 W 0.71 HP	5-15P	168 kg 370.4 lbs	266.5 kg 587.3 lbs	1305 x 955 x 1665 mm 51.38 x 37.60 x 65.55"
CSSU-60M-SV	2 Doors	1524 x 906 x 1532.6 mm 60 x 35.6 x 60.4"	4	115/60/1	6.5	530 W 0.71 HP	5-15P	209 kg 460.8 lbs	"310 kg 683.4 lbs	1605 x 995 x 1665 mm 63.19 x 39.17 x 65.55"
CSSU-72M-SV	3 Doors	1821.6 x 906 x 1532.6 mm 71.7 x 35.6 x 60.4"	6	115/60/1	7.5	810 W 1.09 HP	5-15P	217 kg 478.4 lbs	325 kg 716.5 lbs	1910 x 995 x 1665 mm 75.20 x 39.17 x 65.55"



www.sub-equip.com

## Marbletop Undercounter Refrigerator with 8 pcs sauce pans



### Durable Stainless Steel Construction

Built with commercial-grade stainless steel for long-lasting performance in restaurants, cafés, dessert shops, salad bars, and bubble tea stores.

### Marble Countertop

Premium white marble top delivers an elegant, easy-to-clean work surface that resists stains, scratches, and moisture.

### 8 Round Cut-Out Wells

Designed to hold standard topping containers for ingredients such as fruit, sauces, jellies, condiments, and cold bar prep items

### Glass Sneeze Guard Display

Front and top glass canopy provides clear visibility while protecting displayed ingredients and ensuring food-safe operation.

### Heavy-Duty Casters

Equipped with 4" lockable casters for easy movement, cleaning, and installation.

### Easy Maintenance

Front-accessible components, removable pans, and stainless steel surfaces simplify daily cleaning routines.

Certified Safe: SGS & SGS Sanitation certified for professional commercial kitchen use.

- Interior temperature range: 1°C to 4°C ( 33°F to 40°F)

Model	Doors	S/S Bain-Marie	Exterior Dimensions (W x D x H)	Shelves	Voltage (V/Hz/Ph)	Amps	Power	NEMA PLUG	N.W	G.W	Packing Size (W x D x H)
CUC-60-ST	2 Doors	8	1554 x 771 x 1593.9 mm 61.18" x 30.35" x 62.75"	4	115/60/1	4	400 W 0.54 HP	5-15P	213.5KG 471 lbs	268.5KG 592 lbs	1636 x 855 x 1730 mm 64.41" x 33.66" x 68.11"



www.sub-equip.com

## Undercounter Refrigerator with 8 pcs 1/6 size pans



## Features

- CFC free refrigerant and foam insulation
- Electronic thermostat and digital LED temperature display for accurate control and easy reading
- Self-Closing Swing Door
- Magnetic gasket can be replaced without any tools
- External: 430 Stainless Steel framework construction
- Internal: 304 Stainless Steel
- Auto defrosting and auto evaporation to prevent condensation
- The coated copper tube, with a robust 0.7mm thickness, ensures durability.
- Crafted from a single bent tube, it has only two welding joints, reducing the risk of leaks
- Condensor sits inside the condensation pan efficiently evaporates excess water
- Adjustable, heavy-duty epoxy coated wire shelves
- 1/6 size Polycarbonate GN pan(8pcs) and 9" plastic cutting board included
- Easy to mount 4" casters (front casters with brakes) are standard with all units
- Electrical: 115/60/1 with NEMA 5-15P plug, 10ft cord
- R-290 refrigerant
- SGS & SGS Sanitation Certificate

- Interior temperature range: 1°C to 4°C ( 33°F to 40°F)

Model	Doors & Drawers	1/6 Size Pan Capacity	Exterior Dimensions (W x D x H)	Shelves	Voltage (V/Hz/Ph)	Amps	Power	NEMA PLUG	N.W	G.W	Packing Size (W x D x H)
CSSU-60-2D8L	1 Door & 2 Drawers	8	1524 x 760 x 912 or 1079mm 60.00 x 29.92 x 35.9" or 42.5"	2	115/60/1	4	400 W 0.54 HP	5-15P	134 kg 295 lbs	185 kg 407 lbs	1636 x 855 x 1145 mm 64.41 x 33.66 x 45.08"



www.sub-equip.com

# PIZZA PREP TABLE REFRIGERATOR



## Features

- CFC free refrigerant and foam insulation
- Electronic thermostat and digital LED temperature display for accurate control and easy reading
- Self-Closing Swing Door
- Magnetic gasket can be replaced without any tools
- External: 430 Stainless Steel framework construction
- Internal: 304 Stainless Steel
- Auto defrosting and auto evaporation to prevent condensation
- The coated copper tube, with a robust 0.7mm thickness, ensures durability.
- Crafted from a single bent tube, it has only two welding joints, reducing the risk of leaks
- Condensor sits inside the condensation pan efficiently evaporates excess water
- Adjustable, heavy-duty epoxy coated wire shelves
- 1/3 size Polycarbonate GN pan and plastic cutting board included
- Easy to mount 4" casters (front casters with brakes) are standard with all units
- Electrical: 115/60/1 with NEMA 5-15P plug, 10ft cord
- R-290 refrigerant
- SGS & SGS Sanitation Certificate



www.sub-equip.com



- Interior temperature range: 1°C to 4°C ( 33°F to 40°F)
- Cutting Board Depth: 453 mm (17.9")

Model	Doors & Drawers	1/3 Size Pan Capacity	Exterior Dimensions (W x D x H)	Shelves	Voltage (V/Hz/Ph)	Amps	Power	NEMA PLUG	N.W	G.W	Packing Size (W x D x H)
CPP-44	1 Door	6	1222 x 896 x 946 or 1097 mm 48.00 x 35.38 x 37.25 or 43.25"	2	115/60/1	4	400 W 0.54 HP	5-15P	118.5 kg 262 lbs	168.5 kg 372 lbs	1300 x 945 x 1180 mm 51.25 x 37.25 x 46.50"
CPP-44-2D	2 Drawers	6	1222 x 896 x 946 or 1097 mm 48.00 x 35.38 x 37.25 or 43.25"	0	115/60/1	4	400 W 0.54 HP	5-15P	128.5 kg 284 lbs	178.5 kg 394 lbs	1300 x 945 x 1180 mm 51.25 x 37.25 x 46.50"
CPP-67	2 Doors	9	1830 x 896 x 946 or 1097 mm 72.00 x 35.38 x 37.25 or 43.25"	4	115/60/1	4.5	450 W 0.61 HP	5-15P	129 kg 284 lbs	183 kg 403 lbs	1910 x 945 x 1180 mm 75.25 x 37.25 x 46.50"
CPP-67-2D	1 Door & 2 Drawers	9	1830 x 896 x 946 or 1097 mm 72.00 x 35.38 x 37.25 or 43.25"	2	115/60/1	4.5	450 W 0.61 HP	5-15P	139 kg 307 lbs	203 kg 448 lbs	1910 x 945 x 1180 mm 75.25 x 37.25 x 46.50"
CPP-67-4D	4 Drawers	9	1830 x 896 x 946 or 1097 mm 72.00 x 35.38 x 37.25 or 43.25"	0	115/60/1	4.5	450 W 0.61 HP	5-15P	159 kg 351 lbs	223 kg 492 lbs	1910 x 945 x 1180 mm 75.25 x 37.25 x 46.50"
CPP-93	3 Doors	12	2440 x 896 x 946 or 1097 mm 96.00 x 35.38 x 37.25 or 43.25"	6	115/60/1	6	600 W 0.81 HP	5-15P	190 kg 418 lbs	230 kg 506 lbs	2520 x 945 x 1180 mm 99.25 x 37.25 x 46.50"
CPP-93-2D	2 Doors & 2 Drawers	12	2440 x 896 x 946 or 1097 mm 96.00 x 35.38 x 37.25 or 43.25"	4	115/60/1	6	600 W 0.81 HP	5-15P	198 kg 436 lbs	238 kg 523 lbs	2520 x 945 x 1180 mm 99.25 x 37.25 x 46.33"
CPP-93-4D	1 Door & 4 Drawers	12	2440 x 896 x 946 or 1097 mm 96.00 x 35.38 x 37.25 or 43.25"	2	115/60/1	6	600 W 0.81 HP	5-15P	206 kg 453 lbs	246 kg 541 lbs	2520 x 945 x 1180 mm 99.25 x 37.25 x 46.25"
CPP-93-6D	6 Drawers	12	2440 x 896 x 946 or 1097 mm 96.00 x 35.38 x 37.25 or 43.25"	0	115/60/1	6	600 W 0.81 HP	5-15P	216 kg 475 lbs	254 kg 559 lbs	2520 x 945 x 1180 mm 99.25 x 37.25 x 46.25"



www.sub-equip.com

# WORKSTATION REFRIGERATOR

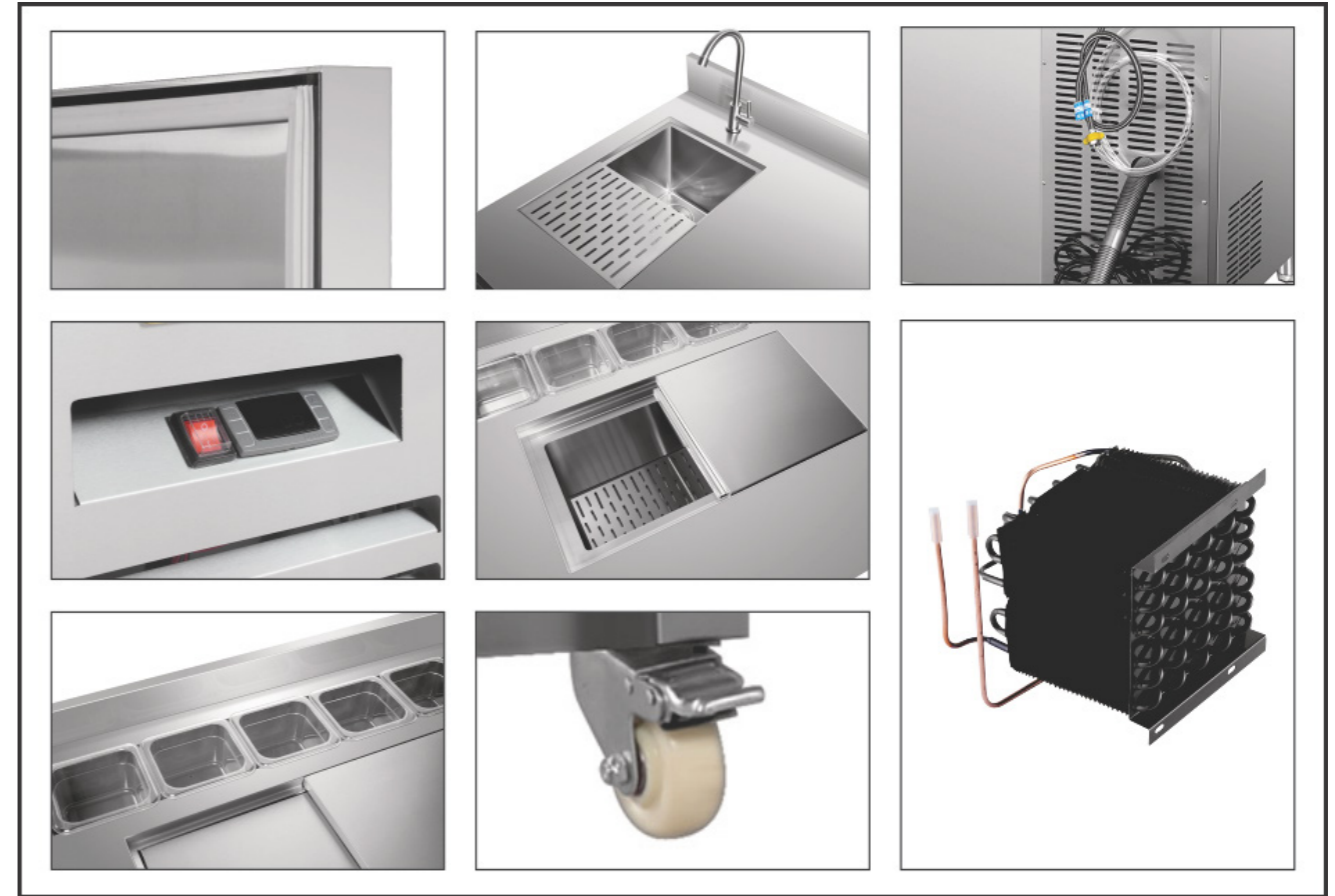


## Features

- All-in-One Underbar Station
- CFC free refrigerant and foam insulation
- Electronic thermostat and digital LED temperature display for accurate control and easy reading
- Refrigerated base drawers & self-closing swing door
- The coated copper tube, boasting a epoxy 0.7mm thickness, ensures durability. Crafted from a single bent tube, minimizing the risk of leaks with only two welding joints.
- The condenser is efficiently positioned inside the condensation pan to facilitate the evaporation of excess water.
- INTERIOR: 304 Stainless Steel ; EXTERIOR: 430 Stainless Steel
- Integrated bar sink with faucet & drainboard
- Heavy-duty polyethylene coated adjustable wire shelves
- 1/6 size stainless steel pans
- Interior temperature range: 1°C to 4°C (33°F to 40°F)
- Electrical specifications: 115/60/1 with a NEMA 5-15P plug and a 10ft cord.
- R-290 refrigerant
- SGS & SGS Sanitation Certificate



www.sub-equip.com



- Interior temperature range: 1°C to 4°C ( 33°F to 40°F)

Model	Doors & Drawers	1/3 Size Pan Capacity	Exterior Dimensions (W x D x H)	Shelves	Voltage (V/Hz/Ph)	Amps	Power	NEMA PLUG	N.W	G.W	Packing Size (W x D x H)
CUSS-60	1 Door & 1 Drawer	5	1526.6 x 802.6 x 1002 mm 60.10 x 31.60 x 39.40"	2	115/60/1	4	400 W 0.54 HP	5-15P	190 kg 418 lbs	240 kg 528 lbs	1636 x 945 x 1210 mm 64.40 x 37.20 x 47.60"
CUSS-72	1 Door & 1 Drawer	6	1830.6 x 802.6 x 1002 mm 72.10 x 31.60 x 39.40"	2	115/60/1	4	400 W 0.54 HP	5-15P	200 kg 440 lbs	260 kg 572 lbs	1904 x 945 x 1210 mm 75.00 x 37.20 x 47.60"
CUSS-84	1 Door & 2 Drawers	7	2138.2 x 802.6 x 1002 mm 84.20 x 31.60 x 39.40"	2	115/60/1	5.5	550 W 0.75 HP	5-15P	220 kg 484 lbs	280 kg 616 lbs	2224 x 945 x 1210 mm 87.60 x 37.20 x 47.60"
CUSS-96	1 Door & 2 Drawers	9	2438.3 x 802.6 x 1002 mm 96.00 x 31.60 x 39.40"	2	115/60/1	6	600 W 0.81 HP	5-15P	250 kg 550 lbs	300 kg 660 lbs	2528 x 945 x 1210 mm 99.50 x 37.20 x 47.60"



www.sub-equip.com

# GRAB N GO REFRIGERATOR



## Features

- All-steel base construction with Stainless Steel exterior
- Easily accessible light and power switch
- Rear access to refrigeration system for quick and easy service Adjustable leg levelers
- On-Demand PTC condensate evaporator provided for a totally self-contained system
- Stainless Steel step riser
- Night curtain included
- Auto defrosting and auto evaporation to prevent condensation Condensation pan efficiently evaporates excess water
- EXTERIOR: 430 Stainless steel
- INTERIOR: 304 Stainless steel
- Temperature : 2 to 8°C / 36 to 46°F
- Electrical: 115/60/1 with NEMA 5-15P plug, 10ft cord
- R-290 refrigerant
- SGS & SGS Sanitation Certificate



www.sub-equip.com



- Interior temperature range: 2°C to 8°C ( 36°F to 46°F)

Model	Type	Exterior Dimensions (W x D x H)	Voltage (V/Hz/Ph)	Amps	Power	NEMA PLUG	N.W	G.W	Packing Size (W x D x H)
GNG-F30	Square ends	762 x 864 x 838 mm 30.00 x 34.00 x 33.00"	115/60/1	7	600 W 0.81 HP	5-15P	110 kg 242 lbs	130 kg 287 lbs	850 x 970 x 1037 mm 33.50 x 38.25 x 40.88"
GNG-F36	Square ends	914 x 864 x 838 mm 36.00 x 34.00 x 33.00"	115/60/1	8.5	750 W 1.01 HP	5-15P	120 kg 264 lbs	140 kg 309 lbs	995 x 970 x 1037 mm 39.50 x 38.25 x 40.88"
GNG-F50	Square ends	1270 x 864 x 838 mm 50.00 x 34.00 x 33.00"	115/60/1	10	820 W 1.10 HP	5-15P	130 kg 286 lbs	160 kg 353 lbs	1345 x 970 x 1037 mm 53.00 x 38.25 x 40.88"
GNG-F59	Square ends	1499 x 864 x 838 mm 59.00 x 34.00 x 33.00"	115/60/1	11	1025W 1.37 HP	5-15P	160 kg 352 lbs	180 kg 397 lbs	1580 x 970 x 1037 mm 62.25 x 38.25 x 40.88"
GNG-F77	Square ends	1956 x 864 x 838 mm 77.00 x 34.00 x 33.00"	115/60/1	20	1098 W 1.47 HP	Dual 5-15P	200 kg 440 lbs	220 kg 485 lbs	2035 x 970 x 1037 mm 80.12 x 38.25 x 40.88"

Model	Type	Exterior Dimensions (W x D x H)	Voltage (V/Hz/Ph)	Amps	Power	NEMA PLUG	N.W	G.W	Packing Size (W x D x H)
GNG-C30	Curved ends	762 x 864 x 838 mm 30.00 x 34.00 x 33.00"	115/60/1	7	600 W 0.81 HP	5-15P	110 kg 242 lbs	130 kg 287 lbs	850 x 970 x 1037 mm 33.50 x 38.25 x 40.88"
GNG-C36	Curved ends	914 x 864 x 838 mm 36.00 x 34.00 x 33.00"	115/60/1	8.5	750 W 1.01 HP	5-15P	120 kg 264 lbs	140 kg 309 lbs	995 x 970 x 1037 mm 39.50 x 38.25 x 40.88"
GNG-C50	Curved ends	1270 x 864 x 838 mm 50.00 x 34.00 x 33.00"	115/60/1	10	820 W 1.10 HP	5-15P	130 kg 286 lbs	160 kg 353 lbs	1345 x 970 x 1037 mm 53.00 x 38.25 x 40.88"
GNG-C59	Curved ends	1499 x 864 x 838 mm 59.00 x 34.00 x 33.00"	115/60/1	11	1025W 1.37 HP	5-15P	160 kg 352 lbs	180 kg 397 lbs	1580 x 970 x 1037 mm 62.25 x 38.25 x 40.88"
GNG-C77	Curved ends	1956 x 864 x 838 mm 77.00 x 34.00 x 33.00"	115/60/1	20	1098 W 1.47 HP	Dual 5-15P	200 kg 440 lbs	220 kg 485 lbs	2035 x 970 x 1037 mm 80.12 x 38.25 x 40.88"



www.sub-equip.com

# GRAB N GO-REFRIGERATED AIR MERCHANDISER



## Features

- Digital temperature controller
- LED lighting on every shelf
- Night curtain included
- Adjustable shelves for flexible storage
- Easy-to-install 4" casters (front locking) standard on all units
- Exterior: 430 stainless steel construction
- Interior: 304 stainless steel construction
- Integrated price label holders
- On-demand PTC condensate evaporator for a fully self-contained system
- Automatic defrost and evaporation system to prevent condensation
- Interior temperature range: 2°C to 8°C (36°F to 46°F)
- Double-tempered glass side panels
- Electrical: 115V / 60Hz / 1 Phase, NEMA 5-15P plug with 10 ft power cord
- 60", 72", 79" and 84" equipped with a 5-20P plug
- R-290 refrigerant
- SGS & SGS Sanitation Certificate



www.sub-equip.com



- Interior temperature range: 2°C to 8°C ( 36°F to 46°F)

Model	Exterior Dimensions (W x D x H)	Shelves	Voltage (V/Hz/Ph)	Amps	Power	NEMA PLUG	N.W	G.W	Packing Size (W x D x H)
GNG-30	762 × 800 × 2023 mm 30.0 × 31.5 × 79.6"	5	115/60/1	8	800 W 1.1 HP	5-15P	160 kg 352 lbs	200 kg 440 lbs	822 × 840 × 2165.5 mm 32.36 × 33.07 × 85.26"
GNG-36	914 × 800 × 2023 mm 35.98 × 31.5 × 79.6"	5	115/60/1	10	1000 W 1.3 HP	5-15P	190 kg 418 lbs	240 kg 528 lbs	974.4×840×2165.5 mm 38.36×33.07×85.26"
GNG-48	1220 × 800 × 2023 mm 48.03 × 31.5 × 79.6"	5	115/60/1	10	1000 W 1.3 HP	5-15P	210 kg 462 lbs	260 kg 572 lbs	1279.2 × 840 × 2165.5 mm 50.36 × 33.07 × 85.2"
GNG-60	1524 × 800 × 2023 mm 60.0 × 31.5 × 79.6"	10	115/60/1	12	1400 W 1.9 HP	5-20P	230 kg 506 lbs	280 kg 616 lbs	1584 × 840 × 2165.5 mm 62.36 × 33.07 × 85.26"
GNG-72	1828 × 800 × 2023 mm 71.97 × 31.5 × 79.6"	10	115/60/1	14	1600 W 2.2 HP	5-20P	260 kg 572 lbs	330 kg 726 lbs	1888.8 × 840 × 2165.5 mm 74.36 × 33.07 × 85.26 "
GNG-79	1998 × 800 × 2023 mm 78.66 × 31.5 × 79.6"	10	115/60/1	14	1600 W 2.2 HP	5-20P	280 kg 616 lbs	350 kg 770 lbs	2058 × 840 × 2165.5 mm 81.02 × 33.07 × 85.26"
GNG-84	2134 × 800 × 2023 mm 84.02 × 31.5 × 79.6"	10	115/60/1	16	1600 W 2.2 HP	5-20P	310 kg 682 lbs	380 kg 836 lbs	2193.6 × 840 × 2165.5 mm 86.36 × 33.07 × 85.26"

# CAKE DISPLAY SHOWCASE



## Features

- Energy efficient Low-e triple Four sides right angle design, good insulation and display effect
- CFC Free Refrigerant And Foam
- Electronic Thermostat And Digital LED Temperature Display For Accurate Control And Easy Reading
- Adjustable heavy Duty Shelves and Concealed Refrigerated Drawers design
- LED Light For Better Display.
- Efficient electrothermal defogging
- With fan cooling system.
- Auto defrosting and auto evaporation to prevent condensation
- Condensation pan efficiently evaporates excess water
- High quality marble base, stylish appearance, durable, easy to clean
- Easy to mount 3" casters (lockable in front) are standard with all units.
- Interior temperature range: 2°C to 8°C (36°F to 46°F)
- Electrical: 115/60/1 with NEMA 5-15P plug, 10ft cord
- Dual Compressors & Dual Plug: FDC-79-4D,FDC-95-4D
- R-290 refrigerant
- SGS & SGS Sanitation Certificate



- Interior temperature range: 2°C to 8°C ( 36°F to 46°F)

Model	Doors & Drawers	Exterior Dimensions (W x D x H)	Shelves	Voltage (V/Hz/Ph)	Amps	Power	NEMA PLUG	N.W	G.W	Packing Size (W x D x H)
FDC-48-2D	2 Doors & 2 Drawers	1200 x 800 x 1359 mm 47.25 x 31.50 x 53.50"	1	115/60/1	12.2	1468 W 1.97 HP	5-15P	300 kg 660 lbs	330 kg 728 lbs	1280 x 890 x 1550 mm 50.50 x 35.00 x 61.00"
FDC-60-3D	2 Doors & 3 Drawers	1500 x 800 x 1359 mm 59.00 x 31.50 x 53.50"	1	115/60/1	13	1468 W 1.97 HP	5-15P	360 kg 792 lbs	400 kg 882 lbs	1580 x 890 x 1550 mm 62.25 x 35.00 x 61.00"
FDC-71-3D	2 Doors & 3 Drawers	1800 x 800 x 1359 mm 70.88 x 31.50 x 53.50"	1	115/60/1	13.8	1502 W 2.01 HP	5-15P	420 kg 924 lbs	470 kg 1037 lbs	1880 x 890 x 1550 mm 74.00 x 35.00 x 61.00"
FDC-79-4D	4 Doors & 4 Drawers	2000 x 800 x 1359 mm 78.75 x 31.50 x 53.50"	1	115/60/1	22	1912 W 2.56 HP	Dual 5-15P	490 kg 1078 lbs	540 kg 1191 lbs	2080 x 890 x 1550 mm 82.00 x 35.00 x 61.00"
FDC-95-4D	4 Doors & 4 Drawers	2400 x 800 x 1359 mm 94.50 x 31.50 x 53.50"	1	115/60/1	24	2000 W 2.68 HP	Dual 5-15P	540 kg 1188 lbs	600 kg 1323 lbs	2480 x 890 x 1550 mm 97.75 x 35.00 x 61.00"



www.sub-equip.com

# SUSHI DISPLAY SHOWCASE



## Features

- Material: 304 fingerprint-resistant stainless steel
- Lighting: 4000K LED interior lighting
- Cooling System: Direct cooling with concealed piping; temperature range -2°C to 2°C (28.4°F to 35.6°F)
- Door Type: Glass sliding door
- Flat top – suitable for food preparation or product display
- Drainage: Large 1" diameter drain for faster and easier cleaning
- Refrigerant: Environmentally friendly R290 hydrocarbon refrigerant
- Electrical: 115V / 60Hz / 1Ph, NEMA 5-15P plug, 10 ft power cord
- Certification: SGS & SGS Sanitation Certified



www.sub-equip.com



- Interior temperature range: -2°C to 2°C (28.4°F to 35.6°F)

Model	Condenser Display case	Exterior Dimensions (W x D x H)	Sliding Back Doors	103 x 262mm 4.06 x 10.32" Size Pan	Voltage (V/Hz/Ph)	Amps	Power	NEMA PLUG	N.W	G.W	Packing Size (W x D x H)
SSC-91-L	Left Side	914 x 305 x 266 mm 36.00 x 12.00 x 10.50"	2	4	115/60/1	2.5	300 W 0.41 HP	5-15P	50 kg 111 lbs	60 kg 133 lbs	1014 x 405 x 384 mm 39.92 x 15.94 x 15.12"
SSC-91-R	Right Side	914 x 305 x 266 mm 36.00 x 12.00 x 10.50"	2	4	115/60/1	2.5	300 W 0.41 HP	5-15P	50 kg 111 lbs	60 kg 133 lbs	1014 x 405 x 384 mm 39.92 x 15.94 x 15.12"
SSC-122-L	Left Side	1219 x 305 x 266 mm 48.00 x 12.00 x 10.50"	2	7	115/60/1	2.5	300 W 0.41 HP	5-15P	63 kg 139 lbs	75 kg 165 lbs	1319 x 405 x 384 mm 51.93 x 15.94 x 15.12"
SSC-122-R	Right Side	1219 x 305 x 266 mm 48.00 x 12.00 x 10.50"	2	7	115/60/1	2.5	300 W 0.41 HP	5-15P	63 kg 139 lbs	75 kg 165 lbs	1319 x 405 x 384 mm 51.93 x 15.94 x 15.12"
SSC-152-L	Left Side	1524 x 305 x 266 mm 60.00 x 12.00 x 10.50"	4	10	115/60/1	2.5	300 W 0.41 HP	5-15P	79 kg 175 lbs	95 kg 210 lbs	1624 x 405 x 384 mm 63.94 x 15.94 x 15.12"
SSC-152-R	Right Side	1524 x 305 x 266 mm 60.00 x 12.00 x 10.50"	4	10	115/60/1	2.5	300 W 0.41 HP	5-15P	79 kg 175 lbs	95 kg 210 lbs	1624 x 405 x 384 mm 63.94 x 15.94 x 15.12"
SSC-182-L	Left Side	1830 x 305 x 266 mm 72.00 x 12.00 x 10.50"	4	13	115/60/1	2.5	300 W 0.41 HP	5-15P	95 kg 210 lbs	115 kg 254 lbs	1930 x 405 x 384 mm 75.98 x 15.94 x 15.12"
SSC-182-R	Right Side	1830 x 305 x 266 mm 72.00 x 12.00 x 10.50"	4	13	115/60/1	2.5	300 W 0.41 HP	5-15P	95 kg 210 lbs	115 kg 254 lbs	1930 x 405 x 384 mm 75.98 x 15.94 x 15.12"
SSC-213-L	Left Side	2134 x 305 x 266 mm 84.00 x 12.00 x 10.50"	4	15	115/60/1	2.5	300 W 0.41 HP	5-15P	110 kg 243 lbs	125 kg 276 lbs	2234 x 405 x 384 mm 87.95 x 15.94 x 15.12"
SSC-213-R	Right Side	2134 x 305 x 266 mm 84.00 x 12.00 x 10.50"	4	15	115/60/1	2.5	300 W 0.41 HP	5-15P	110 kg 243 lbs	125 kg 276 lbs	2234 x 405 x 384 mm 87.95 x 15.94 x 15.12"